



Northeastern

ILLINOIS UNIVERSITY

Learn in the city. Lead in the world

Psychology Department

Term: Fall | Issue: 34 | Date: December 15, 2025



FALL SEMESTER 2025

Happy December, Psychology Students!

We have made it to the end of the Fall 2025 semester! In this edition of the newsletter, you will find an update on advising, a recap of our alumni panel, and a few updates on what we've been up to! We especially want to recognize our wonderful graduates who have worked so hard to balance their personal, academic, and working lives to achieve their academic goals. The NEIU Psychology Department is honored to be a part of your marvelous journey.

Q: GUESS THE CORE COMPETENCY...

(FIND THE CORRECT ANSWER IN THE PSYCHOLOGY
CORE COMPETENCIES SECTION!)

- Recognize how social structures and systems historically have and presently can create and perpetuate inequality and exclusion
- Understand, appreciate, and engage multiple ways of thinking, ways of life and value systems across cultures
- Employ and inhabit different modes of analysis and different “languages” for understanding the world

CONGRATULATIONS, GRADUATES!



Congratulations to our...



FALL 2025 GRADUATES!



***In spite of all the challenges you may
have faced, YOU made it. We are so
proud of all of our graduates and wish
you the absolute best!***



ADVISING UPDATE

Departmental advising will continue through Thursday, December 19. Please note that all advising appointments between now and 12/19 will be held virtually. To schedule your appointment, please use the link below.

After December 19, from December 22–23, students who need assistance may contact Dr. Saszik, Department Chair (s-saszik@neiu) directly for support.

The University will be closed for the break on 12/24 and will reopen on 1/5.

If you have any questions or need guidance before the break, please be sure to schedule a virtual advising session or reach out during the 12/22–12/23 window.

Best of luck as the semester wraps up!

**USE THE LINK OR SCAN THE QR CODE TO BOOK
APPOINTMENTS BETWEEN NOW AND 12/19!**

Advising link:

[https://calendar.app.google/
PUC5EE2m1S2MCwuA6](https://calendar.app.google/PUC5EE2m1S2MCwuA6)



ALUMNI PANEL RECAP

Missed our clinical-focused alumni panel? Here's a quick recap on what some of our remarkable alumni are up to!



Katrina Ramirez, class of 2019, received an MA in Clinical Mental Health Counseling from Chicago School of Professional Psychology. Now in private practice at a BIPOC/LGBTQ+ focused practice.

Avanii Inarii Hazzard, class of 2017, received an MSW from Chicago State University. Currently working as a psychotherapist at CORH Counseling and as an operations manager at First Defense Legal Aid.



Agnieszka Kucharski, class of 2014, received an MA in clinical psychology from Roosevelt University and an MS Education in Behavior Analysis from Northern Illinois University. She currently works in a residential facility for people with developmental disabilities and as a behavior therapist in an ABA clinic.

Joseph Troiani, class of 1971, received an MA and PhD in Clinical Psychology and a Masters in Health Administration. He is now Associate Professor of Clinical Psychology at Adler University, President of the Board of Mental Health America of Illinois, Past President of the Illinois Psychological Association (IPA) and recently awarded a Fellow of the American Psychological Association (APA). He is also President of the Board of Directors of the Illinois Certification Board (ICB).



Israel Gross (Moe), class of 2006, received an MA in Social Sciences from University of Chicago and a PhD in Clinical psychology from Loyola. He is now in private practice and an Assistant Professor at the College of Lake County, and will be teaching a class at NEIU next semester.

21ST ANNUAL FALL PSYCHOLOGY STUDENT SYMPOSIUM

Our 21st Annual Psychology Department Research Symposium took place on Friday, December 5th, and we had an absolute blast! Below is the program with all of our student names and their amazing presentations. Photos are posted on our Instagram [@neiu_psychology](#)!

Meghan Seymour, Maria Urbietta, Heather Chilson, Kohinoor Majed (Faculty Sponsor: Dr. Young), CAN YOU COPE: Stressors and Day to Day Life

Anabelle Jimenez, Joshua Lameka, Eduardo A. Rodas, Kelly Smolen, Paige Watson-Escamilla (Faculty Sponsor: Dr. Farmer), The Body, Mind, and Society: An Approach to the Coping Mechanisms of the Modern College Student

Alena Nemkina, Bart Kaminski, Bianca Pereira, Jasmine Valencia (Faculty Sponsor: Dr. Young), Identity & Friendship: How do Your Friends Influence Who You Are?

Lubna Kurdi, Sabrina Lewis, Gisele Trujillo (Faculty Sponsor: Dr. Farmer), Beyond Traits: Personality's Role in Stress, Relationships, and Belief Systems

Jesica Arenas, Lisaida Figueroa, Destin Sopena, Christina Esparza-Cassidy (Faculty Sponsor: Dr. Young), Enhancing Children's Cognitive Reflection

Alexia Limas, Nico Linares, Daymen Pascual, MarQuis Rhodes (Faculty Sponsor: Dr. Farmer), Impact of Childhood Trauma on College Experience

Mateusz Iwan, George Kando, Jocely Guerra, Oscar Vergara (Faculty Sponsor: Dr. Young), Religiosity and Stress: How They Affect Grades and Each Other

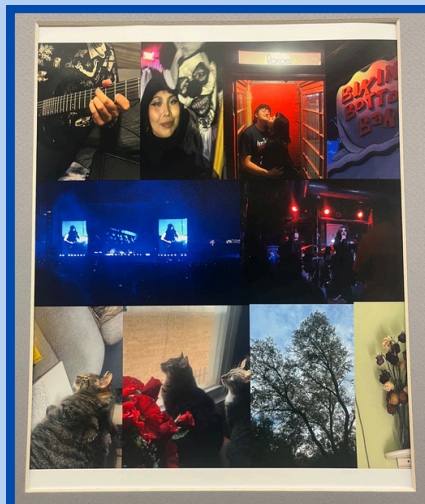
Natalie Guzman, Marty Kalas, Bryan Scheinkopf, Edgar Silva (Faculty Sponsor: Dr. Farmer), Conditions that are Associated with Depression and Anxiety in University Students

Jacqueline Acosta, Jaqueline Bucio, Alejandro Fernandez (Faculty Sponsor: Dr. Young), The Effects of Language/Emotional Brokering on College Students

Alfredo Aguilar, Mongohnay Brown, Heather Chilson, Asmita Das, Mayra Montante (Faculty Sponsor: Dr. Dykema-Engblade) Service Learning: The Sites, the Projects, and the Challenges

PSYCHOLOGY STUDENTS ON ART

Did you know our psychology students are also artistically inclined? These collages were made by our MA/BA+1 students in PSYC 509 Special Topics - *Your Brain on Art: How the Arts Transform Us* (Magsamen & Ross, 2023) and our capstone students in PSYC 396! Check out our collection of 20 student-made collages in the PSYCH Space (BBH-317)!



THE NEW AND IMPROVED PSI CHI

Psi Chi is Back — And Better Than Ever!

We're excited to announce the resurgence of Psi Chi, the International Honor Society in Psychology, here at NEIU! This isn't just a space for research ideas, article discussions, or theoretical deep-dives (though we love those too!) — it's a community for *all* psychology students, no matter your interest or focus. Whether you're passionate about clinical methods, developmental studies, neuroscience, social psychology, or anything in between, Psi Chi is here to support your academic growth *and* personal wellness.

We're building something special: a space where students can connect academically *and* socially, share ideas, get support, and grow together. From conference opportunities and certifications to friendship, mentorship, and mutual encouragement, we're creating a network that lifts us up as scholars and as people.

We'd love for you to be part of this new chapter. Dr. Merchant will serve as our society's faculty advisor.

Interested in joining or learning more?
Reach out to Agata Soltys or Alejandro Trejo!

awsoltys@neiu.edu - Agata Soltys
A-Trejo9@neiu.edu - Alejandro Trejo



HUMAN DEVELOPMENTAL SCIENCE

For more information on the MA or the BA+1 program, click the link below or scan the QR code!

<https://www.neiu.edu/academics/programs/master-arts-human-developmental-science>



CHECK OUT OUR NEW PSYCH MINORS!

NEW!

MINOR IN FORENSIC PSYCHOLOGY

**2 PSYC COURSES + 2 SOC COURSES + 2 JUST COURSES + 1 ELECTIVE
= 21 CREDIT HOURS**

- PSYC 200
General
Psychology (4
credit hours)

- PSYC 329
Psychology of
Criminal
Behavior (3
credit hours)

- JUST 201 Intro
to the Criminal
Justice System
(3 credit hours)

- JUST 312
Theories of
Criminal
Behavior (3
credit hours)

- SOC 304
Sociology of
Law (3 credit
hours)

- SOC 316 Race
and Ethnic
Relations (3
credit hours)

- 1 Elective in
PSYC, SOC, or
JUST (based on
Advisor Approval)
(3 credit hours)



Careers with a Forensic Psych Minor:

- Behavioral Health Technician (with PSYC major)
- Case Manager (PSYC, SOC)
- Community Outreach Coordinator (SOC)
- Correctional (PSYC, JUST, SOC)
- Court Clerk or Legal Assistant (JUST)
- Crime Analyst (SOC)
- Crime Scene Investigator (JUST)
- Diversity & Inclusion Specialist (SOC)
- Fraud Investigator (JUST)

Forensic psychology applies psychological principles and research to legal issues, assisting in criminal investigations, civil cases, and the judicial system, often involving assessments, expert testimony, and interventions. This minor is 21 credit hours and perfect for those who are interested in criminal justice, civil law, victimology, correctional, investigative, and police psychology.

**QUESTIONS? CONTACT L-CUEVAS@NEIU.EDU OR
DEPTPSYC@NEIU.EDU TO SEND IN ANY QUESTIONS YOU MAY HAVE!**

CHECK OUT OUR NEW PSYCH MINORS!

NEW MINOR IN NEUROSCIENCE

Only 3 PSYC and 3 BIO courses needed:

PSYC 200: General Psychology
PSYC 202: Stats & Research Methods I
300-level elective:
- PSYC 350: Physiological Psychology
- or PSYC 371: Neuropsychology

BIO 201: General Biology I
BIO 301: Cell Biology *
300-level elective:
- BIO 365: Neurobiology
- or BIO 380H: Sensory Mechanisms

***For students not pursuing a biology major or minor, the BIO 250 prerequisite will be waived, and they may substitute CHEM 110 for CHEM 211.**



Opportunities

- This interdisciplinary field has growing applications in healthcare, research, and psychological treatments.



Knowledge

- Understand biological and psychological principles that shape behavior, cognition, and brain function.



Flexibility

- This minor is an easy addition to a psychology or biology major, while also complementing other fields.

STUDENT COUNSELING SERVICES



Counseling services are available to currently registered NEIU students. We provide short-term treatment and the number of individual or couples therapy sessions are determined in collaboration with the therapist. Group counseling services are also available to Northeastern students without session limits. Student Counseling Services is open for both in-person and remote services. The mission of Student Counseling Services is to provide high-quality, inclusive, and responsive counseling services. We promote student success and wellness through culturally-sensitive direct service, education, advocacy, and outreach to the NEIU community.

You can use counseling to explore problems in your life such as:

- anxiety
- depression
- suicidal thoughts
- sexual assault and abuse
- grief and loss
- anger
- relationship concerns and many other difficulties that may cause stress and disrupt your life.

Explore the information on this site to learn more about:

- how counseling might help you
- how to refer someone else to a counselor
- how to find help off campus

(773) 442-4650
counsect@neiu.edu

NEIU STUDENT PANTRY



S T U D E N T P A N T R Y

Fall 2025 Hours:

LOCATION SU-123

Mondays: 1:00 p.m. - 6:30 p.m.

Tuesdays: 1:00 p.m. - 6:30 p.m.

Wednesdays: 11:00 a.m. - 6:30 p.m.

Thursdays: 11:00 a.m. - 6:30 p.m.

Friday: 1:00 p.m. - 6:30 p.m.

Contact Us:

student-pantry@neiu.edu

Or call Student Affairs at 773-442-4600

Closed During University Observed Holidays

Applying to a **STEM Ph.D.** or **Master's** program?

**Join our work group to get
support applying to
graduate programs**



The Student Center for Science Engagement
neiu.edu/SCSE

Are you a psychology student planning on applying to graduate school this fall? The Student Center for Science Engagement (SCSE) is forming a cohort of STEM students who are applying to Ph.D. or M.S. programs this Fall to offer peer support, staff advising, deadline reminders, and community. If you would like to be a part of this cohort, please complete this form: Graduate School Application Working Group. See the flyer above for more information!

ICE RESPONSE GUIDE

Tarjeta De Derechos

- Le estoy dando esta tarjeta porque no deseo hablar o tener mas contacto con usted.
 - Yo elijo ejercer mi derecho a mantenerme callado y me niego a contestar sus preguntas.
 - Si me arresta, seguiré ejerciendo mi derecho a mantenerme callado y a negarme a contestar sus preguntas.
 - Yo quiero hablar con un abogado antes de contestar
- Quiero contactar a este abogado/organización:
-

- 나는 당신에게 말 원하지 않기 때문
- 나는 침묵을 유지
- 당신이 나를 체포 거부 할 수있는
- 귀하의 질문에 답
- 이 변호사 또는

연락을

사하기로 결정한다.
문에 답하는 것을

습니다.

Karta praw

- Daję Ci tą kartę ponieważ nie chcę z Tobą rozmawiać ani mieć jakiegokolwiek kontakt z Tobą.
- Chcę skorzystać z prawa do zachowania milczenia i odmawiam odpowiedzi na jakiegokolwiek pytania.
- Jeżeli mnie aresztujesz, ja nadal będę korzystał z prawa do zachowania milczenia i odmówię odpowiedzi na jakiegokolwiek pytania.
- Chcę porozmawiać z prawnikiem, zanim odpowiem na jakiegokolwiek pytania.
- Chciałbym się skontaktować z tym prawnikiem / organizacją:

STAY SAFE ON CAMPUS

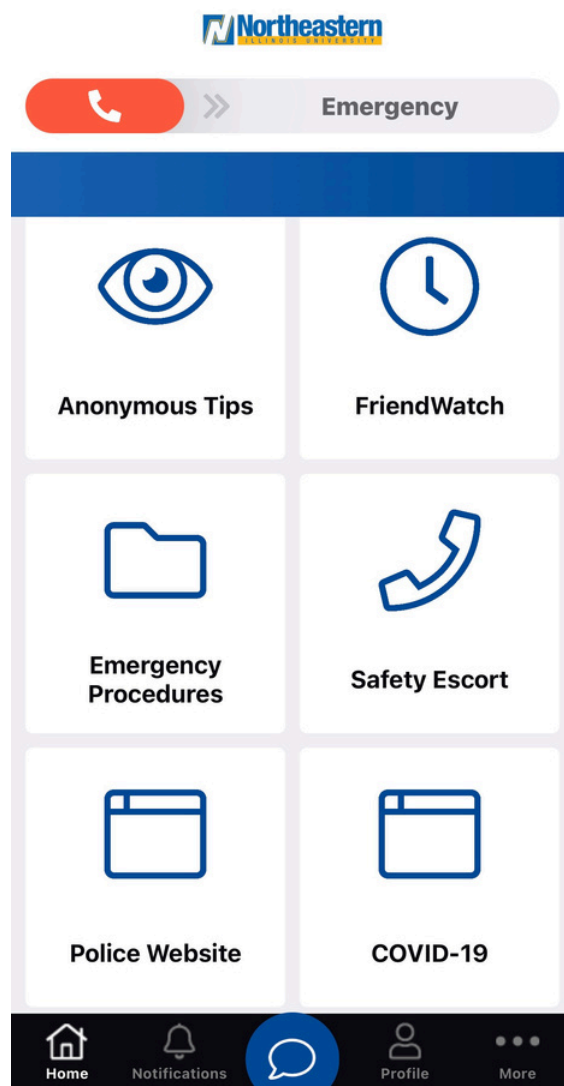
Want to learn more about how to stay safe on campus?
Check this out!

Download “CampusShield” on the Apple App Store or Google Play. You can also register online using this link:

<https://portal.publicsafetycloud.net/community-alerts/Northeastern-Illinois-University>

After putting in your information (make sure to use your NEIU email) select the NEIU communities that appear. You will then be taken to this screen that features some extremely useful tools.

You will be able to learn about emergency procedures, how to call for a safety escort, and even how to leave an anonymous tip for a variety of situations. All of this can be done directly through the app!



PSYCHOLOGY CORE COMPETENCIES

A: Active Community Participation and Engaging a Diverse Community

Many competencies that you will acquire in the liberal arts and sciences which prepare you for career success. But, really, these skills help you succeed in life in general and play a role in shaping the world around you, from your family life to your neighborhoods to the nation and the globe! To participate in public life and influence the world around you, you need to be able to understand a culturally diverse world, the respective interests of different groups of people (such as the needs of our children and of older adults), the landscape of social inequality, and more. Participating actively to influence the world you want requires a number of skills –communication, ethical reasoning, creativity, teamwork, and so on.

MORE HELP? WE GOT YOU!

Student Service Coordinator

Lori Cuevas, MA

In person location: BBH 313G

Email l-cuevas@neiu.edu to set up appt.



Office Administrator

Kristin Wilkens

In person location: BBH 313F

Email kl-wilkens@neiu.edu for questions.



Lab Manager

Anabelle Jimenez

In person location: BBH 313A

Email a-jimenez19@neiu.edu for questions.



STAY IN TOUCH

Save the Date!

December Break - University Closed / No
Classes - Wednesday, December 24, 2025 -
Friday, January 2, 2026

Stay Connected!



[@neiu_psychology](https://www.instagram.com/neiu_psychology)



Google Classroom

Psychology Department's
Google Classroom

<https://classroom.google.com>
code: rszuvk4

