

University Police Report 2022

John J. Escalante,
Chief of Police
Northeastern Illinois University



FY22 UPD Budget Update

- The NEIUPD saw an overall budget reduction of 15% for FY22
- The NEIUPD is currently staffed by 8 fewer employees compared to Jan.21
- For the Fall 21 and Spring 22 semester the university police have contracted with Security Specialist Group (SSG) to assist with coverage
- Immediate positions to be filled in order to maintain a proper level of safety and security include 1 security guard and 1 telecommunicator
- A new civilian manager for the UPD is under consideration to handle all administrative duties, plus accreditation manager, Co-chair the Emergency Management Team, and possible Risk Management duties.

FY22 UPD Operations/Training (July 1- Dec 31)

- The NEIUPD handled 6,830 calls/reports for service
- 2,384 building checks, 1,018 grounds checks, 63 found/lost articles, 47 police escorts, 36 suspicious persons/vehicle, 56 fire/security alarms, 11 medical assists, 11 well-being checks, 6 thefts, 11 disturbances, 6 DTP
- All staff, police, TCs, security were all re-certified for First Aid/CPR/AED
- In addition to *daily training* on police policies, additional training for department members included classes on *community policing, social media, Clery, sexual assault investigations, de-escalation, LGBTQ community, use of force, active shooter, hazardous materials, case reporting, and Spanish for law enforcement*
- A new “Safety Training” tab with various links was added to the UPD webpage

FY22 UPD Spring Plans

- UPD Staff will continue to work and provide safety and security to all NEIU campuses, including times the university may be “remote”
- Spring semester will see the completion of campus safety upgrades including a new “BRG” emergency message system, new security cameras, additional hands free entrances.
- A new ordinance violation will be introduced as an option for certain low level misdemeanors in lieu of a physical arrest.
- On-going training, including updated de-escalation training for January.
- An open-invitation to our campus community for ideas and suggestions to improve the services we provide and/or build better campus relationships

University Police Report 2022

Contact information for the Northeastern Illinois University Police

24 hour phone 773-442-4100

24 hour email police@neiu.edu

Location - the Parking Garage in Lot F

Chief John Escalante j-escalante3@neiu.edu



NEIU Board Educational Topics Preference Results					
	1st Place	2nd Place	3rd Place	Alternate	Score*
The Legislative Process and the Boards Role	4	1	4		18
The NEIU Foundation & How the Board Increases Fundraising Collaborations	2	2	2		12
Student Mental Health and Well Being	3	3	3		18
Why Boards need to Prioritize Cybersecurity		3			6
Freedom of Speech	1			1	4
HSI Funding				1	1
Problem Solving and Decision Making in Board Role				1	1
Board/President Relations				1	1
Equity in Minority Purchasing Contracting and Employment Matters				1	1

*** 1st Choice = 3 Points**
2nd Choice = 2 Points
3rd Choice = 1 Point

COVID-19 Response: (/about/return-campus) NEIU will be operating remotely through Jan. 30, 2022. We're excited to welcome you back to campus on Jan. 31, 2022.



[Financial Aid \(/financial-aid\)](#)

[Academics \(/academics\)](#)



[University Life \(/university-life\)](#)

Training

[Alumni & Giving \(/alumni-and-giving\)](#)

[About \(/about\)](#)

BOARD OF TRUSTEES

[Home \(/\)](#) / [About \(/about\)](#) / [Board of Trustees \(/about/board-of-trustees\)](#) / [Training](#)

(<https://www.neiu.edu/about/board-of-trustees>)

[Board Meeting Materials \(/about/board-of-trustees/board-meeting-materials\)](#)

[Bylaws, Governing Policies and Regulations \(/about/board-of-trustees/bylaws-governing-policies-and-regulations\)](#)

[Calendar of Meetings \(/about/board-of-trustees/calendar-of-meetings\)](#)

[Training \(/about/board-of-trustees/training\)](#)

[Public Comment Procedures \(/about/board-of-trustees/public-comment-procedures\)](#)

[Contact Us \(/about/board-of-trustees/contact-us\)](#)

Trustee Training

Effective Jan. 1, 2017, the [Board of Higher Education Act \(http://www.ilga.gov/legislation/ilcs/ilcs3.asp?ActID=1080&ChapterID=18\)](http://www.ilga.gov/legislation/ilcs/ilcs3.asp?ActID=1080&ChapterID=18) requires "every voting member of the governing board of a public university appointed for a term beginning after January 1, 2016, to complete a minimum of 4 hours of professional development leadership training covering topics that shall include, but are not limited to, public university and labor law, contract law, ethics, sexual violence on campus, financial oversight and accountability, audits, and fiduciary responsibilities of a member of a governing board within 2 years after beginning service and within every 2 years of service thereafter." (110 ILCS 205/13)

The following Northeastern Illinois University Board of Trustees members have completed the required training:

- Carlos Azcoitia (completed Oct. 13, 2021)
- Sherry Eagle (completed Oct. 13, 2021)
- Marvin Garcia (completed Oct. 13, 2021)
- Ann Kalayil (completed Oct. 20, 2020)
- Jim Palos (completed Oct. 20, 2020)
- Charlie Serrano (completed Oct. 20, 2020)
- Jonathan Stein (completed Oct. 20, 2020)

CONTACT US

T (773) 442-5611

bot@neiu.edu
(<mailto:bot@neiu.edu>)

[Contact Us \(/about/board-of-trustees/contact-us\)](#)



Northeastern Illinois University
5500 North St. Louis Avenue
Chicago, Illinois 60625-4699
(773) 583-4050

© 2022 Northeastern Illinois University. | [Legal \(https://www.neiu.edu/legal\)](#) | [Login \(/user/login\)](#)



Preparation of Coming Year
Presidential Goals

Responsible Party: University President
Completed: July 1st



Approval of Coming Year
Presidential Goals

Responsible Party: Board of Trustees
Completed: August 1st



Interviews/Surveys with President's
Direct Reports

Responsible Party: Appointed Board Members
Completed: April 15



Interviews/Surveys with Designated
University Leaders

Responsible Party: Appointed Board Members
Completed: April 15



Presidential Self Evaluation

Responsible Party: University President
Completed: April 15



Board Evaluation of President

Responsible Party: Board Chair and Executive
Committee
Completed: June 1st (delivered to President)
June 10th (Approved by full Board)



Publication of Presidential
Evaluation on NEIU website

Responsible Party: Board of Trustees
Completed: No later than June 30th

NEIU PRESIDENTIAL EVALUATION PROCESS MODEL 2020-2021



Break Barriers.

Executive Committee
Board of Trustees

Planning for a Campaign • Roles for Trustees



*Ted Sudol, J.D.
Managing Director*

January 21, 2022



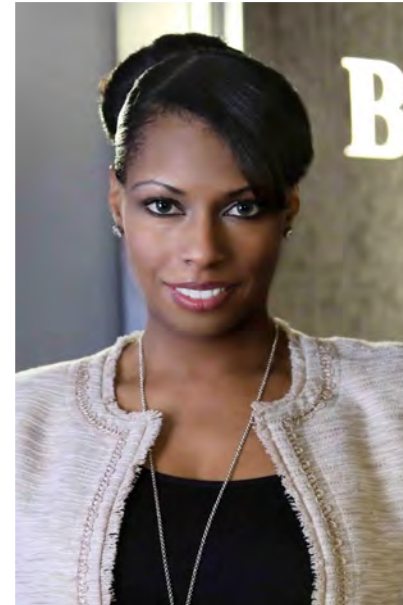
Who's Who on the Carter Team



Bob Carter
Executive Lead Counsel



Ted Sudol, JD
Team Lead Counsel



Angela Barnes, MBA
Counsel



Melissa Brown
Study Coordinator



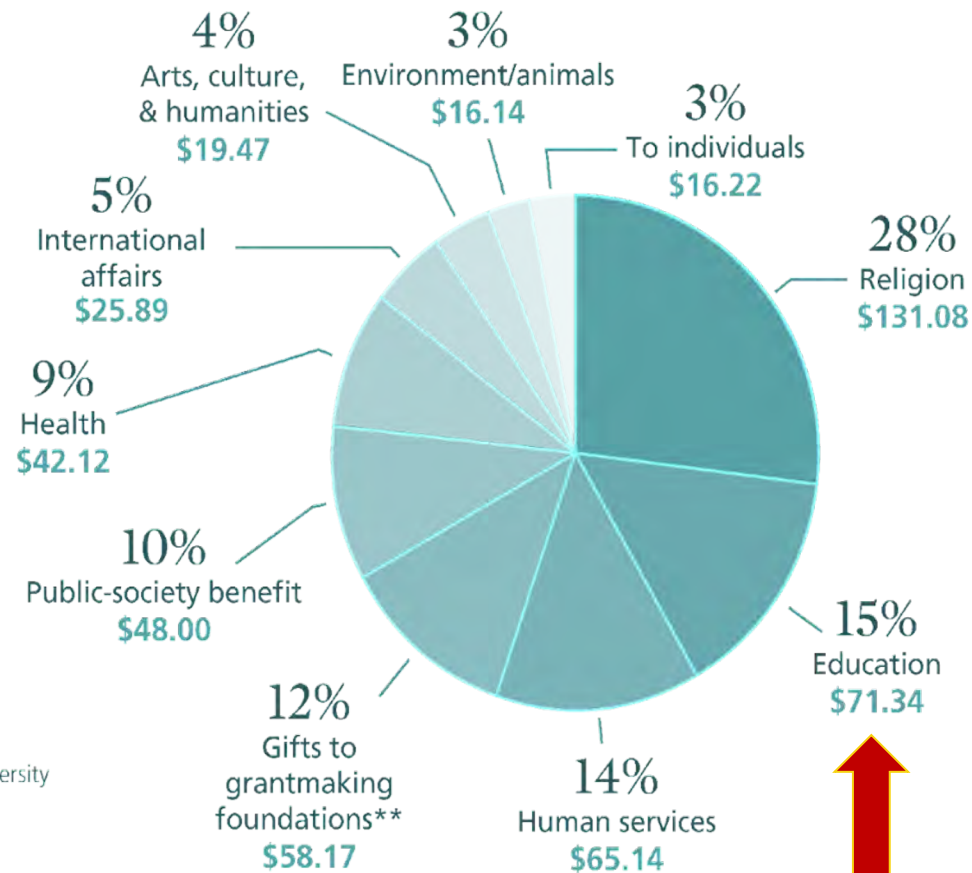
Why a Call for Greater Philanthropic Support of Higher Education?

- **Government support is on the decline**
- **The cost of education continues to rise**
- **Greater philanthropic support = a game-changer**
 - More scholarships/fellowships reduces the financial burden
 - On the students
 - On the university
 - More private funds increases opportunities to access higher education
 - A growing endowment helps sustain existing programs and create new initiatives



2020 contributions: \$471.44 billion by type of recipient organization*

(in billions of dollars - all figures are rounded)



* Total includes unallocated giving, which totaled -\$22.13 billion in 2020.

** Estimates developed by the Indiana University Lilly Family School of Philanthropy using data provided by Candid.

Highlights

Half of annual giving by the USA's **Top 50** donors goes to colleges and universities.

High Net Worth and Ultra High Net Worth households are more likely to give to **education** than any other cause

Individuals and couples with **donor advised funds** give the largest share of their grants to education



Impact of Philanthropy at Northeastern Illinois

“Now, more than ever, your support makes a real difference in our students' lives. Your generous gifts provide bright, promising, hard-working students the opportunity to fulfill their educational goals and make their own mark on the world.”

- www.neiu.edu



The Envisioned Campaign's Potential Priorities

- **Student access and success**
 - Growing scholarships. support for career development, internship opportunities
 - Eliminating barriers to education to improve student access
 - Creating ways to achieve student debt forgiveness
- **Programs and service**
 - Increasing size and scope of research grants
 - Scaling student financial literacy programs
- **Capital funds**
 - Adding a new education building,
 - Creating new centers for student success, student health, and counseling



Our Core Objective

To answer two threshold questions:

- Are there **sufficient philanthropic resources** potentially **available** within the university's sphere of influence to attain the envisioned campaign's anticipated target?
- Does the university demonstrate a **readiness** to launch and successfully conduct a campaign operation capable of achieving the anticipated target?



What We Will Do

- **Case for Support** (Test Summary)
- **Gift Table** (Draft)
- **Focus Groups** (30-40 individuals)
- **Personal Interviews** (45-50 individuals and couples)
- **Web Survey** (Broad-based Sample)
- **Review of Data and Materials**
 - Fundraising – Communications - Marketing
 - Stewardship - Alumni Relations
- **Report** (Findings and Recommendations)



What The Campaign Planning Study Will Yield

- Data Analytics – Findings – Recommendations
- Comprehensive Reports
 - **Feasibility** of a Major Fundraising Initiative/Campaign
 - **Readiness** to Launch and Conduct a Campaign
- Proposed Campaign Plan and Timeline



The University Leadership's Active Support is Essential for Fundraising Success

Why?

Because the leaders of Northeastern Illinois University are uniquely capable of helping connect philanthropic individuals and families with the institution in meaningful ways that enable them to realize their aspirations and dreams for a better tomorrow.





The University Leadership's Active Support is Essential for Fundraising Success

Why?

- **Lead by Example** – Volunteer leaders **inspire others** to act by their personal commitments of time, talents, and financial resources.
- **A Multiplier Factor** – Volunteer leaders **motivate others** to become involved in the life of their university – as volunteers and donors – by their active engagement in development events and initiatives.



Carter's Time-Tested Five Essentials for Campaign Success

- **Leadership**
 - Volunteer Leadership (Trustees – Committee Members)
 - Administration, Faculty, Staff (President's Cabinet – Executive Council – Advancement)
- **Case for Support**
 - Compelling Priorities – Emotional Stories – Data-Driven Metrics
- **Adequate Resources**
 - Human – Financial
- **A Great Plan**
 - Goal is Attainable – Institution is Ready
- **Access to Sufficient Contributable Dollars**
 - Individuals – Corporate – Foundations – Other Sources



Ways That The Trustees Can Be Helpful

- Make **personal financial commitments**
- **Leverage support** in the corporate and professional firm community
- Host **special events** and **small gatherings** with prospective donors
- Attend the university's **fundraising events** and activities
- Identify **prospective donors** and **volunteers**
- **Accompany staff** on visits with prospective donors
- **Open doors** and make connections
- Share **your personal story** of why you care about the future of Northeastern Illinois University



Thank You!