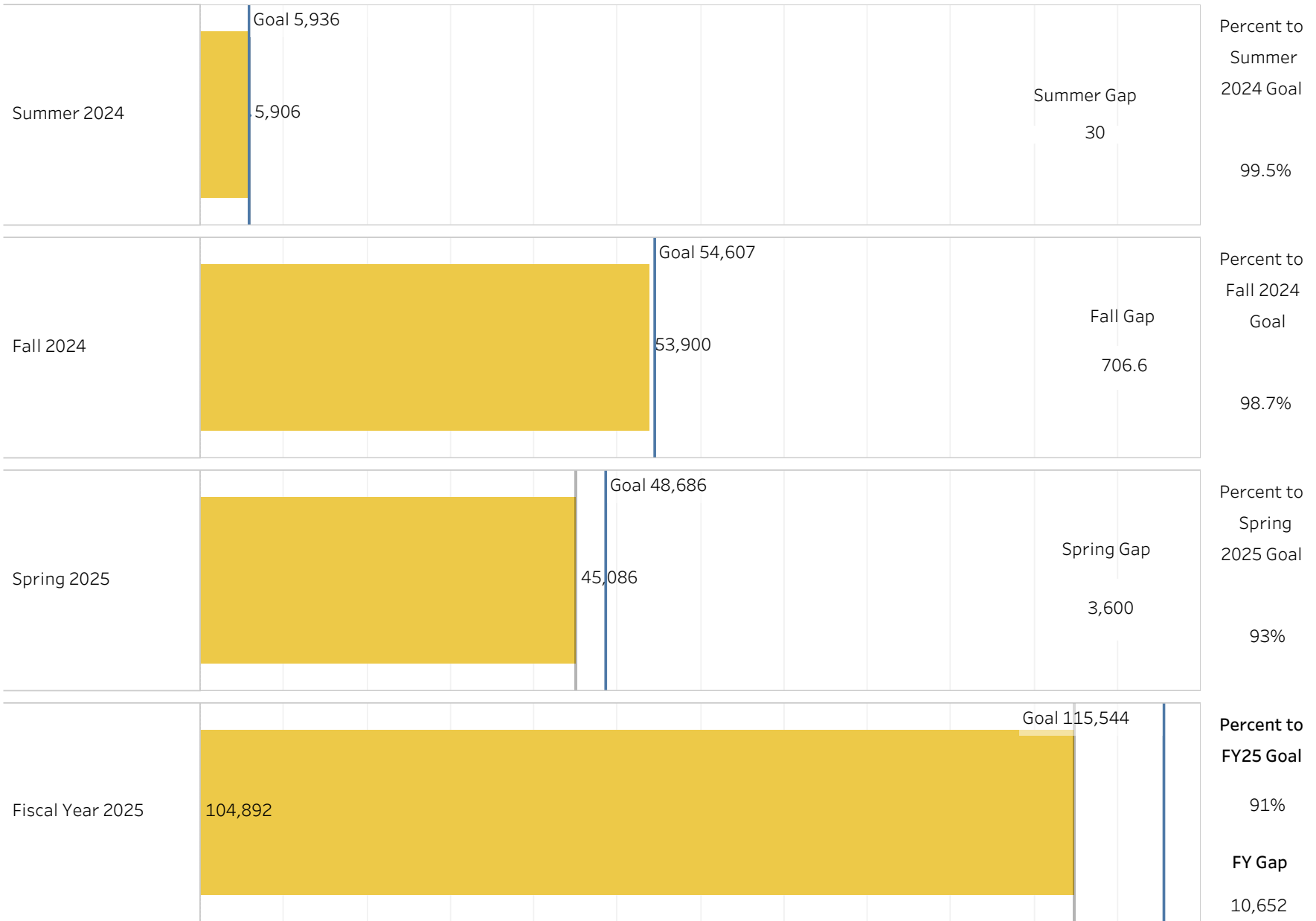


Fiscal Year 2025 Credit Hour Production

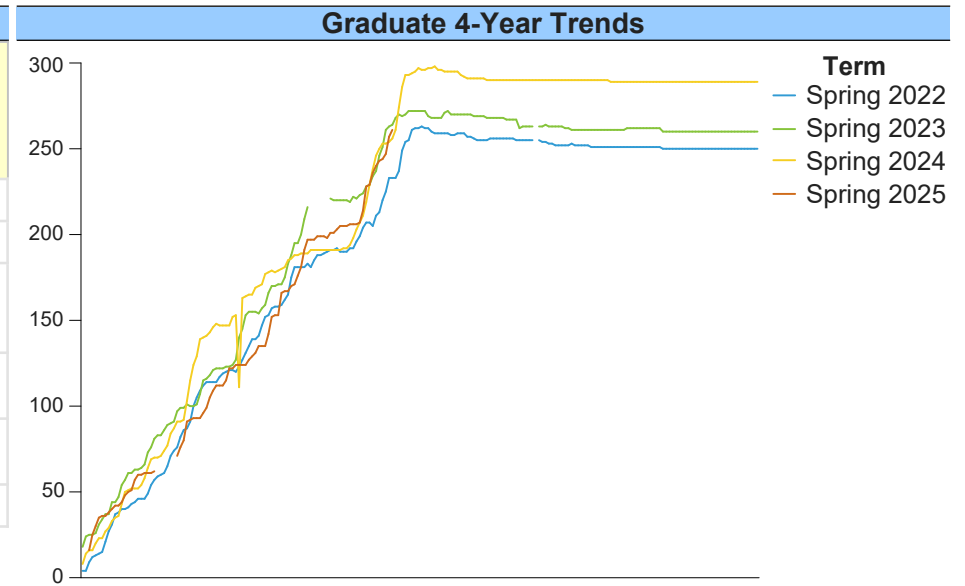


Source: NEIU ODSADM and ODSMGR
 Updates daily until Census date of each semester. Summer and Fall census has passed and these are the final numbers.

Spring 2025 Registration Report for January 16, 2025

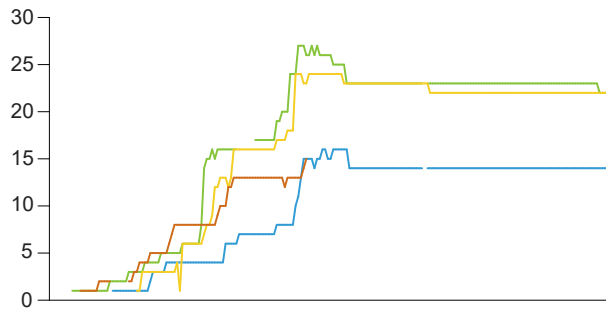
New Students

Overall Summary							
Incoming Class	Spring 2025 Today	Spring 2025 Yesterday	One-Day Change	One-Day Percent Change	Spring 2024 LY To-Date	Spring 2024 to Spring 2025 Change	Spring 2024 to Spring 2025 Percent Change
New Freshmen	15	14	1	7.1%	18	-3	-16.7%
New Transfers	290	281	9	3.2%	262	28	10.7%
New Undergraduate Readmits	47	47	0	0.0%	53	-6	-11.3%
New Unclassified	34	20	14	70.0%	55	-21	-38.2%
Total Undergraduate	386	362	24	6.6%	388	-2	-0.5%
Total Graduate	261	257	4	1.6%	246	15	6.1%

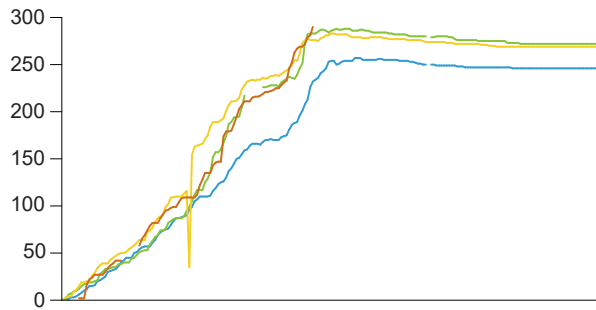


Undergraduate 4-Year Trends

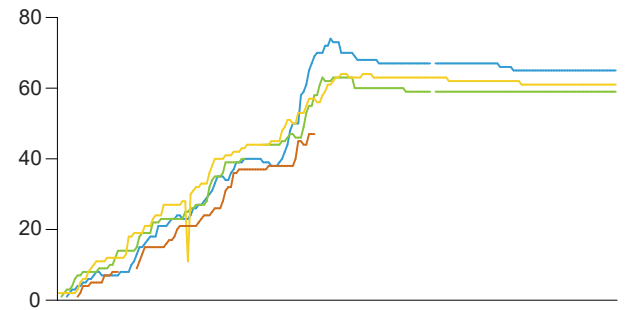
New Freshmen



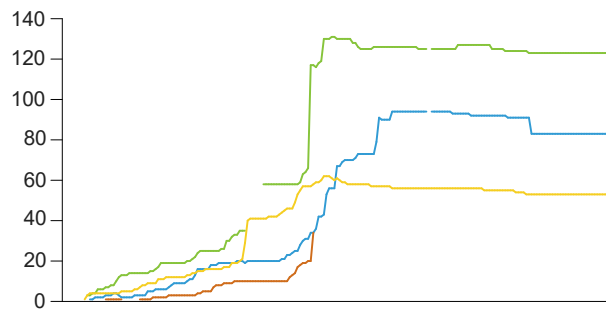
New Transfers



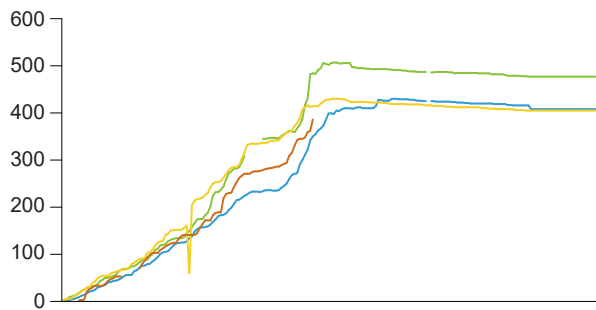
New Undergraduate Readmits



New Unclassified



Total Undergraduate

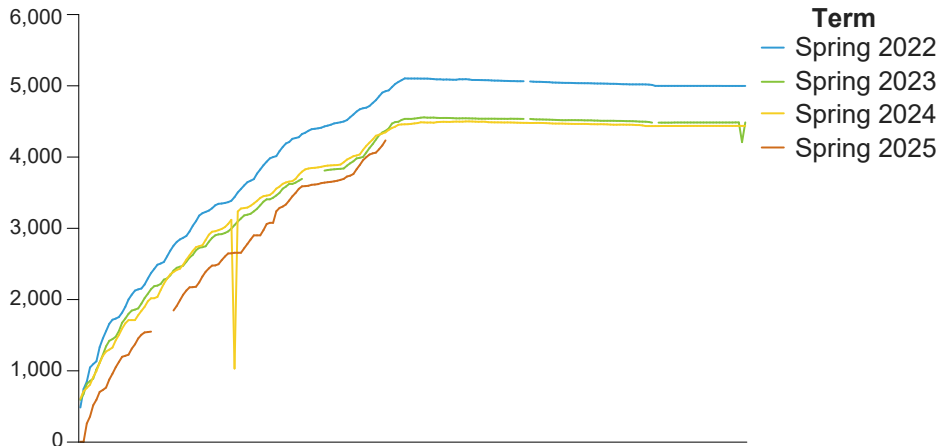


Spring 2025 Registration Report for January 16, 2025

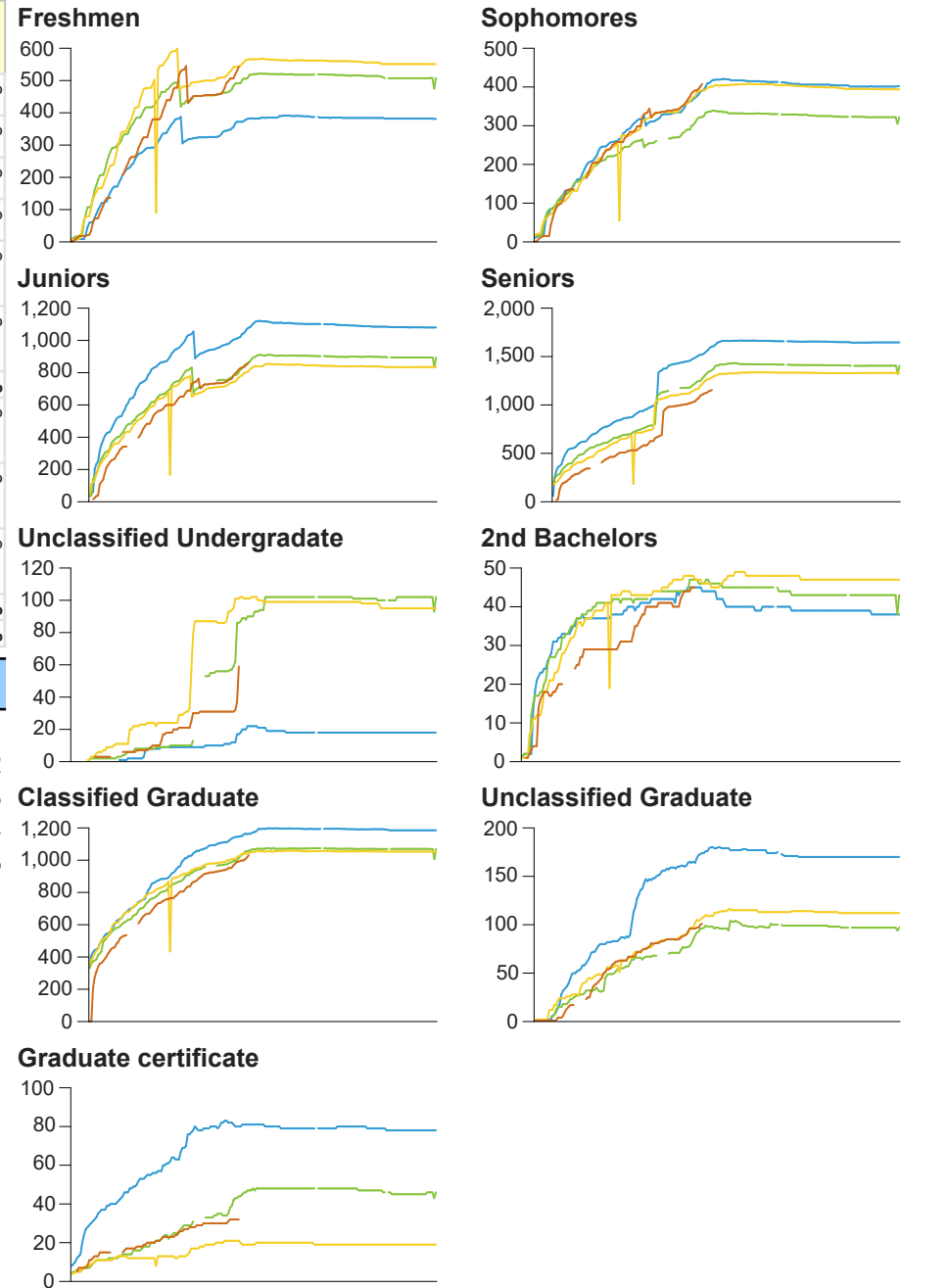
Continuing Students

Overall Summary								
Student Career	Student Class	S25 Today	S25 Yesterday	1-Day Change	1-Day %Change	S24 To-Date	S24 to S25 Change	S24 to S25 % Change
Undergraduate	Freshmen	543	530	13	2.5%	528	15	2.8%
	Sophomores	408	401	7	1.7%	374	34	9.1%
	Juniors	862	854	8	0.9%	777	85	10.9%
	Seniors	1,154	1,147	7	0.6%	1,234	-80	-6.5%
	Unclassified Undergraduate	59	37	22	59.5%	93	-34	-36.6%
	2nd Bachelors	45	45	0	0.0%	48	-3	-6.2%
Undergraduate - Summary		3,071	3,014	57	1.9%	3,054	17	0.6%
Graduate	Classified Graduate	1,030	1,017	13	1.3%	1,030	0	0.0%
	Unclassified Graduate	101	100	1	1.0%	97	4	4.1%
	Graduate certificate	32	32	0	0.0%	21	11	52.4%
Graduate - Summary		1,163	1,149	14	1.2%	1,148	15	1.3%
Overall - Summary		4,234	4,163	71	1.7%	4,202	32	0.8%

Overall 4-Year Trends



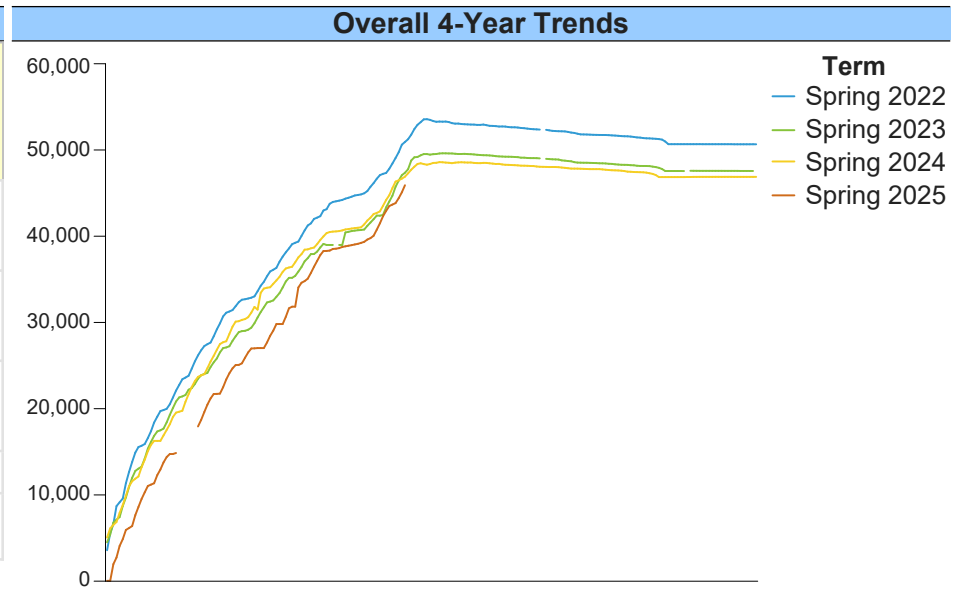
Student Class 4-Year Trends



Spring 2025 Registration Report for January 16, 2025

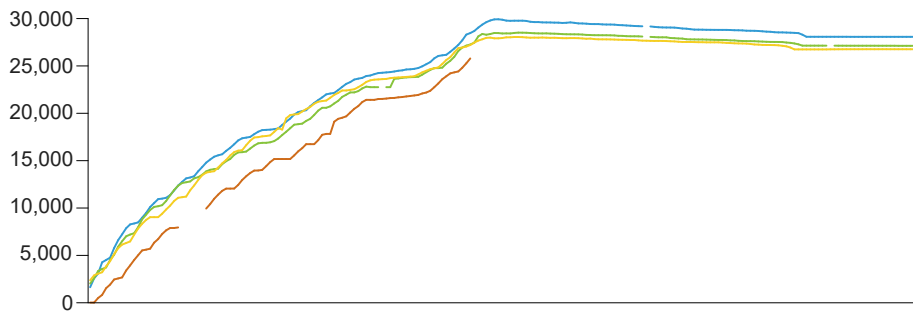
Course Credit Hours: Overall & College Breakouts

Overall Summary							
College	Spring 2025 Today	Spring 2025 Yesterday	One-Day Change	One-Day Percent Change	Spring 2024 LY To-Date	Spring 2024 to Spring 2025 Change	Spring 2024 to Spring 2025 Percent Change
College of Arts & Sciences	25,790.0	25,275.0	515.0	2.0%	25,925.0	-135.0	-0.5%
College of Business & Technology	9,866.0	9,695.0	171.0	1.8%	8,507.0	1,359.0	16.0%
Goodwin College of Education	9,858.5	9,743.5	115.0	1.2%	10,015.5	-157.0	-1.6%
All Others	394.0	372.0	22.0	5.9%	304.0	90.0	29.6%
Total All Colleges	45,908.5	45,085.5	823.0	1.8%	44,751.5	1,157.0	2.6%

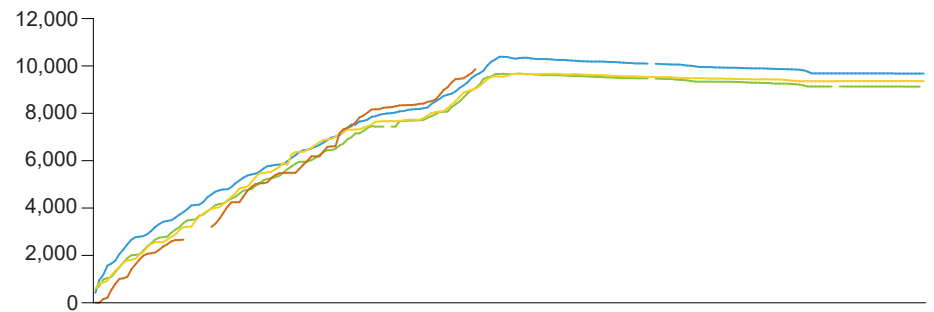


College 4-Year Trends

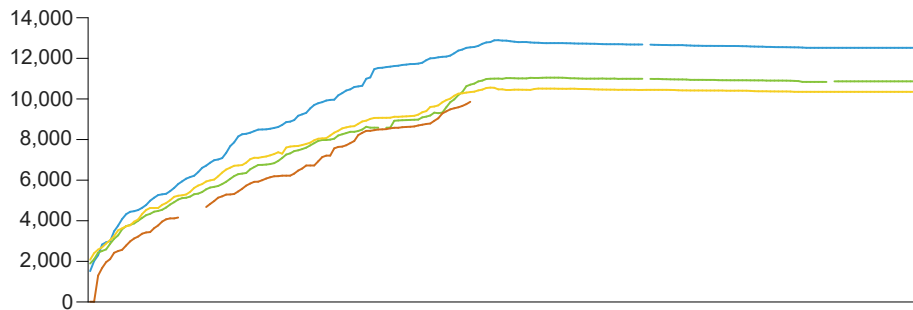
College of Arts & Sciences



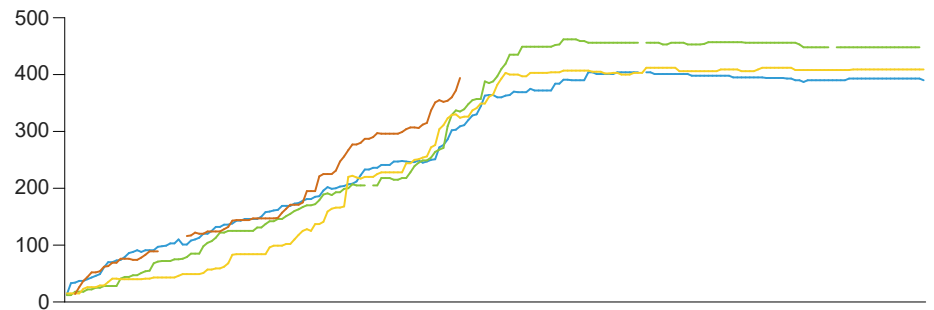
College of Business & Technology



Goodwin College of Education



All Others



Note: All Others includes courses in NDP, Honors Program, Provost-Academic Affairs and Student Affairs.

As of: Jan 16, 2025

For internal enrollment planning only. Do not use for external reporting or grant applications.