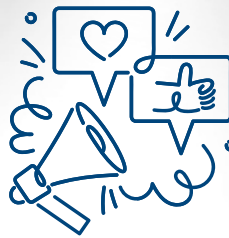


CESA/CSI NEWSLETTER



CESA/CSI OPEN OFFICER POSITIONS

Are you interested in becoming a Chi Epsilon Sigma (CSI)/Counselor Education Student Association (CESA) officer? These organizations operate collaboratively, meaning that officers will represent both CSI and CESA. In addition to being a part of an amazing student leadership team, **elected officers will receive one course waiver for each of two semesters: Fall 2024 and Spring 2025.**

Election Timeline:

- February 9, 2024 at 11:59pm – Deadline to submit [self-nomination form](#) (be sure to be logged into your NEIU Google account to access the form)
- February 12, 2024 – Electronic Ballot sent to all Counselor Education students through department listserv
- February 16, 2024 – Deadline to vote by electronic ballot
- February 20, 2024 – Dr. Gil will notify everyone who was on the ballot individually about the results of the election
- March 1, 2024 – 2024-2025 CESA/Chi Epsilon Sigma officers will be announced at the CSI Initiation Ceremony

[Click here to view position descriptions](#)

✦✦ Highlights



CESA/CSI Open executive officer positions



NEW: Student-led workshops



CSI Graduation cords



Faculty feature: Pamela Fullerton



Upcoming Events



Interested in contributing to our future newsletters? Please let us know!
arramirez68@neiu.edu



NEW

STUDENT-LED workshop series

In collaboration with NEIU's Counselor Education Student Association (CESA/CSI), you are invited to share your experiences and expertise through a workshop or presentation on a counseling topic of your choice!

As we are piloting this new program and navigating scheduling, we are unable to guarantee that time will permit for all submissions to be included in this initial round of the series. If your proposal is not selected, we would love to see your submission come through in our open call for submissions next year.

[CLICK HERE TO APPLY](#)



ATTN: Graduating CSI Members

CSI graduation cords will need to be ordered through the CSI website [HERE](#)

*Find instruction on purchasing cords [HERE](#)





A Call to Action: Preparing Counselors to Work with the Immigrant Community



Pamela Fullerton

LCPC, CCTP, C-DBT, CCATP, NCC
NEIU Adjunct Instructor

As a licensed clinical professional counselor focused on social justice and advocacy, I recognize the local, national, and global concerns that may be impacting our clients and the communities we serve. Having been born and raised in Chicago and coming from an immigrant and racial ethnic minority background myself, I have chosen to focus my work on serving the various BIPOC, immigrant, and other marginalized communities. I am currently completing my dissertation on undocumented immigrants and counselor competency, exploring the need for counseling professionals to receive evidence-based and culturally responsive training to support the mental health and wellness needs of the immigrant and undocumented immigrant communities. The abstract of my dissertation reads,

“The number of immigrants coming to the United States has tripled since the 1970s (Budiman, 2020). Due to various global and international factors, the numbers of immigrants arriving to the United States continues to increase yearly (Ward and Bartalova, 2023). Of the 45+ million immigrants currently in the United States, more than 11 million are undocumented (Budiman, 2020; Chhabra et al., 2023). Research has found that being an undocumented immigrant in the United States comes with many additional challenges and limitations including financial, health, educational, and legal barriers (Allweiss & Hilado, 2018; Capps et al., 2013; Chhabra et al., 2023; Garcini et al., 2016; Garcini et al., 2018; Garcini et al., 2021; Hacker et al., 2015; Logan et al., 2021; Yakushko, 2009).” More than a quarter of the United States’ population is currently being impacted by immigration and in many cases, mental health implications as a result. For this reason, it deems imperative that counselors-in-training (CIT) must prepare to rise to the challenge to support the varying and complex needs associated with the immigrant and undocumented immigrant communities. This is my call to action for all CITs and the larger counseling profession. Now is the time to act.

References

- Allweiss, S., & Hilado, A. (2018). The context of migration: Pre-arrival, migration, and resettlement experiences. In A. Hilado & M. Lundy (Eds.), *Models for practice with immigrants & refugees* (pp. 33-56).
- Budiman, A. (2020, August 20). Key findings about U.S. immigrants. Pew Research Center. <https://www.pewresearch.org/short-reads/2020/08/20/key-findings-about-u-s-immigrants/>
- Capps, R., Fix, M., Van Hook, J., & Bachmeier, J. D. (2013, May). A demographic, socioeconomic, and health coverage profile of unauthorized immigrants in the United States. Migration Policy Institute. <https://www.migrationpolicy.org/research/demographic-socioeconomic-and-health-coverage-profile-unauthorized-immigrants-united-states>
- Chhabra, D., Fortuna, L., & Montano, P. (2023). Stress & trauma toolkit for treating undocumented immigrants in a changing political and social environment. American Psychiatric Association. <https://www.psychiatry.org/psychiatrists/diversity/education/stress-and-trauma/undocumented-immigrants>
- Garcini, L. M., Chen, M. A., Brown, R. L., Galvan, T., Saucedo, L., Cardoso, J. A. B., & Fagundes, C. P. (2018). Kicks hurt less: Discrimination predicts distress beyond trauma among undocumented Mexican immigrants. *Psychology of Violence*, 8(6), 692-701. <https://doi.org/10.1037/vio0000205>
- Garcini, L. M., Daly, R., Chen, N., Mehl, J., Pham, T., Phan, T., Hansen, B., Kothare, A. (2021). Undocumented immigrants and mental health: A systematic review of recent methodology and findings in the United States. *Journal of Migration and Health*, 4, 100058. <https://doi.org/10.1016/j.jmh.2021.100058>
- Garcini, L. M., Murray, K.E., Zhou, A., Klonoff, E. A., Myers, M. G., & Elder, J. P. (2016) Mental health of undocumented immigrant adults in the United States: A systematic review of methodology and findings. *Journal of Immigrant & Refugee Studies*, 14(1), 1-25. <https://doi.org/10.1080/15562948.2014.998849>
- Hacker, K., Anies, M., Folb, B. L., & Zallman, L. (2015). Barriers to health care for undocumented immigrants: A literature review. *Risk Management and Healthcare Policy*, 8, 175-183. <https://doi.org/10.2147/RMHP.S70173>
- Logan, R. I., Melo, M. A., & Castañeda, H. (2021) Familial vulnerability: Legal status and mental health within mixed-status families. *Medical Anthropology*, 40(7), 639-652. <https://doi.org/10.1080/01459740.2021.1879061>
- Ward, N., & Batalova, J. (2023, March 14). Frequently requested statistics on immigrants and immigration in the United States. Migration Policy Institute. <https://www.migrationpolicy.org/article/frequently-requested-statistics-immigrants-and-immigration-united-states>
- Yakushko, O. (2009). Xenophobia: Understanding the roots and consequences of negative attitudes toward immigrants. *The Counseling Psychologist*, 37(1), 36-66. <https://doi.org/10.1177/0011000008316034>

UPCOMING EVENTS

NEIU Faculty Brown Bag Series

Doing Grad School as a SQUIRREL! ADHD in Grad School--Let's Talk About It

Led by Dr. Tejada and Tooba Zafar

Wednesday, February 7th at 1PM via [Zoom](#)



235 School Counselor Exam Student-Led Study Group

We've got this! Join a group of fellow school counseling students who are prepping to take the Illinois Licensure Testing System (235) School Counseling Exam.

- flexible scheduling
- virtual/in-person option
- support from students who have experience passing the exam

Please reach out to Allison to express your interest: arramirez68@neiu.edu



Chi Sigma Iota
Counseling Academic & Professional Honor Society International
Member, Association of College Honor Societies

Chi Epsilon Sigma Chapter

Initiation Ceremony

Northeastern Illinois University

March 1st, 2024, 7-9 PM

