

WILLIAM ITKIN CHILDREN'S CENTER FOR DISABILITIES

Located on the main campus of Northeastern Illinois University, the Children's Center offers one-to-one evaluation and instruction for children with disabilities 6–22 years of age.



EVALUATION

Diagnostic evaluations to better understand your child's learning needs.



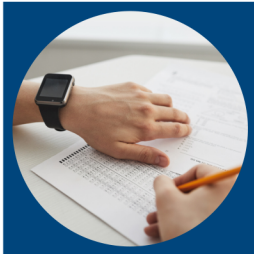
INSTRUCTION

Tailored instruction based on evaluation results to meet your child's learning goals.



RECOMMENDATIONS

Suggestions and recommendations for the classroom to support your child throughout the school year.



www.neiu.edu/ItkinCenter

SERVICES

The Children's Center evaluates children (in either English or Spanish) in the areas of reading, mathematics, and written language, as well as providing emotional/behavioral supports for individuals with autism.

For qualifying families, the Service Center can provide a short-term education plan based on the strengths and needs of the child and deliver instruction in a one-to-one setting for a maximum of two hours per week for the duration of 8 to 10 weeks.

New enrollment for each semester typically begins in September (for fall), late-January (for spring), and June (for summer).

HOW TO ENROLL

The Children's Center serves the residents of the City of Chicago and its surrounding communities. However, due to limited space and availability, all services are offered on a first come, first served basis each semester.

The Children's Center offers services at a nominal fee of \$125 for all testing and instruction delivered on a single semester basis. Fee waivers are available to families in need.

Sessions are held every Tuesday, beginning at 4:30 pm and end at 6:00 pm. If you are interested in reserving a space for your child, please complete the online application at www.neiu.edu/ItkinCenter.



(773) 442-5715

For More Information, Contact



Gerardo Moreno, Ph.D.
(G-Moreno1@neiu.edu)



5500 North Saint Louis Avenue
Chicago, Illinois 60625-4699