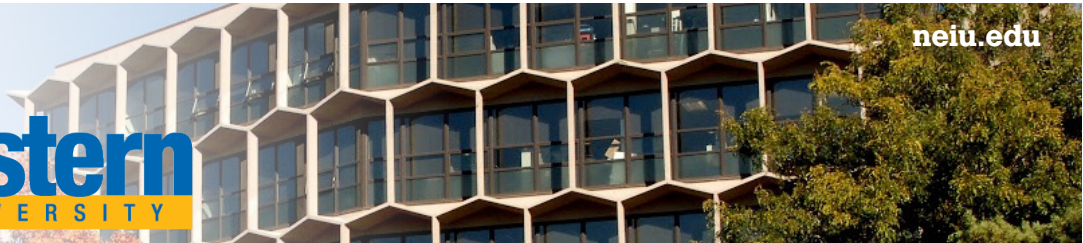


# A snapshot of



**Mission:** Northeastern Illinois University, as a public comprehensive university with locations throughout Chicago, provides an exceptional environment for learning, teaching, and scholarship. We prepare a diverse community of students for leadership and service in our region and in a dynamic multicultural world.

## Distinctions

Northeastern, a federally designated **Hispanic-Serving Institution**, is consistently recognized as a national leader among its peers. Here are some of the highlights.

### EXCELLENCE

- Northeastern alumni have found distinction in virtually every discipline. They are business leaders, scientists, educators, physicians and political leaders, professional artists and musicians, scholars, community builders and innovators.

### LOW STUDENT DEBT

- National Leader in graduating students with least amount of debt *U.S. News & World Report*

### DIVERSITY

- Among the nation's most diverse universities according to *The Wall Street Journal/Times Higher Education* and *U.S. News & World Report*
- Ranked second in the nation among four-year public institutions for diversity among managers *The Chronicle of Higher Education*

### SOCIAL MOBILITY

- Second among Illinois regional public universities in the social mobility ranking, which demonstrates movement up the socioeconomic ladder *U.S. News & World Report*

### SAFETY

- Seventh in the nation and first in Illinois colleges and universities with the lowest rates of property crime and violence associated with property crime *ASecureLife.com*
- Third-safest college campus in the nation *College Stats*

More than  
**7,000**  
students

5,220 undergraduate,  
1,899 graduate

Founded in  
**1867**



**72%**

of students received  
some form of  
financial aid

**47%**

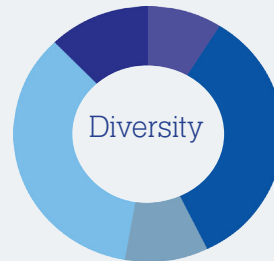
received full  
financial aid packaging  
(Federal, State, MAP)

**101**

countries of citizenship  
represented by our  
student body for  
Fall 2020

## Four Chicago-Area Locations

- Main Campus (North Park)
- Carruthers Center for Inner City Studies (Bronzeville)
- El Centro (Avondale)
- University Center of Lake County (Lake County)



Fall 2020

- 10.2% African American
- 8.5% Asian
- 37.4% Hispanic
- 30.6% White
- 13.3% Unknown/Other

## Tuition

**\$11,827**

Fall 2020/Spring 2021 new  
undergraduate average tuition and  
fees in-state @ 12 credit hours

Northeastern is building the next generation of diverse workers for Chicago, the State of Illinois, and the nation.



**87,044**

total alumni



**28,750**

live in Chicago



**67,874**

live in Illinois

## Accreditation

Higher Learning Commission of the North  
Central Association of Schools and Colleges

### Additional Accreditation Distinctions:

- Association to Advance Collegiate Schools of Business
- Council for Accreditation of Counseling and Related Educational Programs
- Council for the Accreditation of Educator Preparation
- Council on Social Work Education
- National Association of Schools of Art and Design
- National Association of Schools of Music
- National Council on Rehabilitation Education

## Top 10 Majors

- Computer Science
- Psychology
- Social Work
- Accounting
- Interdisciplinary Studies
- Biology
- Management
- Communication, Media and Theatre
- Finance
- Justice Studies

"With the support of my faculty advisor and the TRIO staff, I know that I can't give up because I have people cheering me on. That's the difference between Northeastern and the other schools I've attended. TRIO makes Northeastern stand out."

**Jacquanet Goggins**  
Psychology

TRIO Student Support Services is a program that provides individualized academic and social assistance to students from their freshman year through graduation.



# A snapshot of the



**Mission:** The NEIU Foundation is a nonprofit 501(c)3 organization that develops private support to sustain Northeastern as it transforms the lives of its students, their communities and families. We seek to expand resources, responsibly manage assets entrusted to us, and broaden relationships that benefit Northeastern.

## Endowment Changes Over 5 Years (FY2016 - FY2020)

Endowment has increased by more than \$4M over last 5 fiscal years



**Net Assets**  
**\$16.28M**

Total assets  
less liabilities

## University Impact (FY20)

**183**

total scholarships  
including

**140**

endowed scholarships

**874**

students received  
private scholarships  
and awards

The NEIU Foundation  
distributed

**\$1,457,835**

to the University in FY20 in  
academic, grant and institutional  
support

and

**\$568,472**

in donor-funded  
scholarships in FY20

In fiscal year 2020

**2,051 donors**

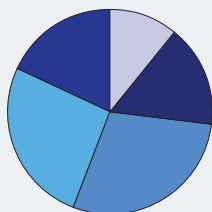
gave

**\$1.91M**

**30%**

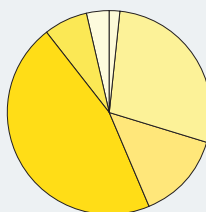
of the total number of donors  
made gifts to Northeastern  
for the first time

Donors by Category



- Alumni - 11%
- Friends - 16%
- Foundations - 29%
- Corporations and Gov't Agencies - 26%
- Faculty, Staff, and Retirees - 18%

Gift Designations



- Scholarships - 44%
- Colleges, Depts. and Programs - 16%
- Student Activities and Services - 8%
- Leader Fund - 4%
- Alumni Association - 2%
- Other - 26%

"Being able to receive the Student Emergency Fund allowed me to keep focusing on my studies. I was able to purchase the needed books for my classes and able to buy necessities during this pandemic. It's great knowing that your University cares about the wellbeing of their students."

-Gabriela L.

## Top Priority Funds

**General Scholarship Fund** Provides critical support for student scholarships regardless of major.

**George Floyd Social Justice Scholarship** Announced by President Gibson in June, this scholarship is dedicated to students pursuing leadership roles in the multifaceted, intersectional work of social justice.

**Leader Fund** Provides unrestricted support where need is greatest across the University.

**Student Emergency Fund** Provides emergency help outside of tuition support for students experiencing crisis due to the pandemic and other circumstances. Since March 1, 2020, this fund has provided more than \$100,000 to 370 students negatively impacted by the pandemic.