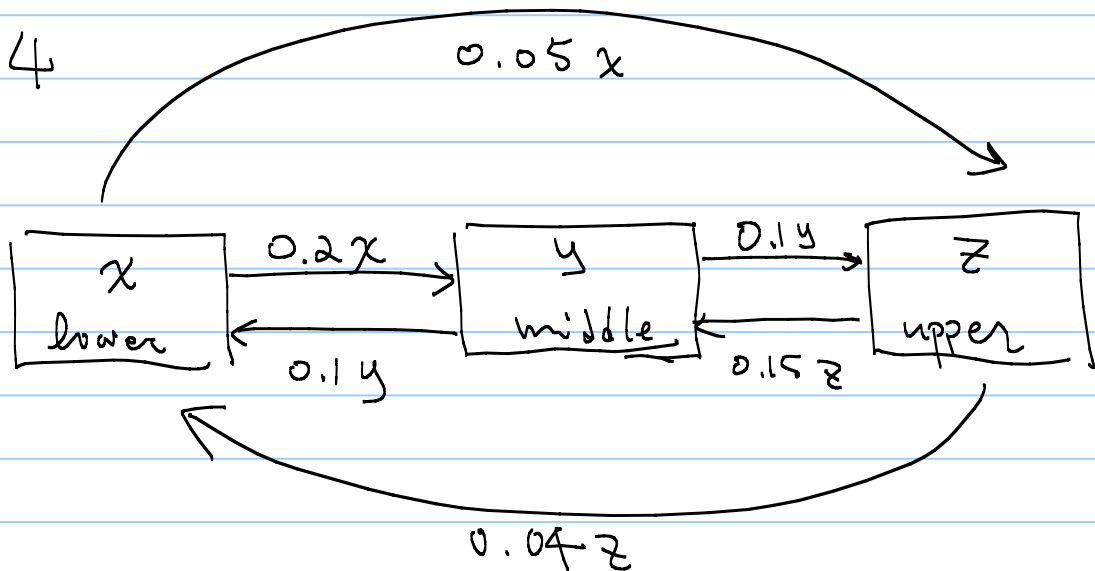


Project 5.9 Part I

Required a, b

For part d: Generate 3 cycles surrounding the fixed point
(different cycles depend on different initial populations)

P 264



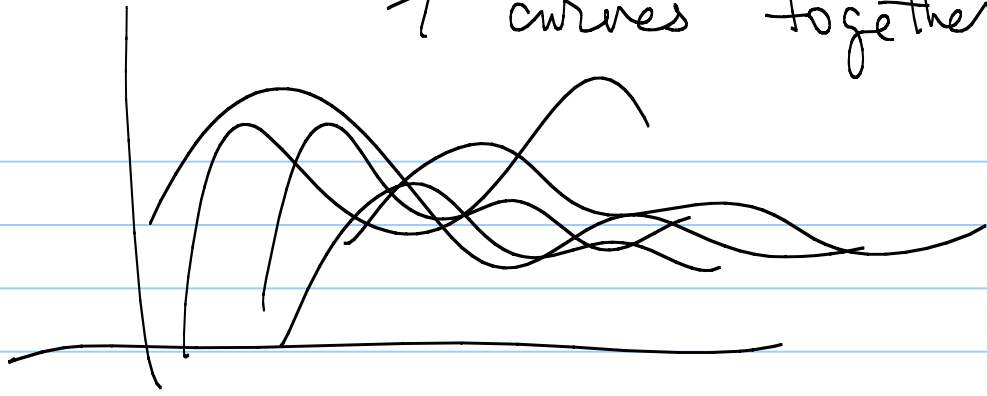
$$x' = (0.1y + 0.04z) - (0.2x + 0.05x)$$

$$y' = (0.2x + 0.15z) - (0.1y + 0.1y)$$

$$z' = (0.05x + 0.1y) - (0.15z + 0.04z)$$

Final project: project 5.8 part II
~~part a~~ a, b (choose a system)

7 curves together



Due /
Tue, May 5.