

Fall

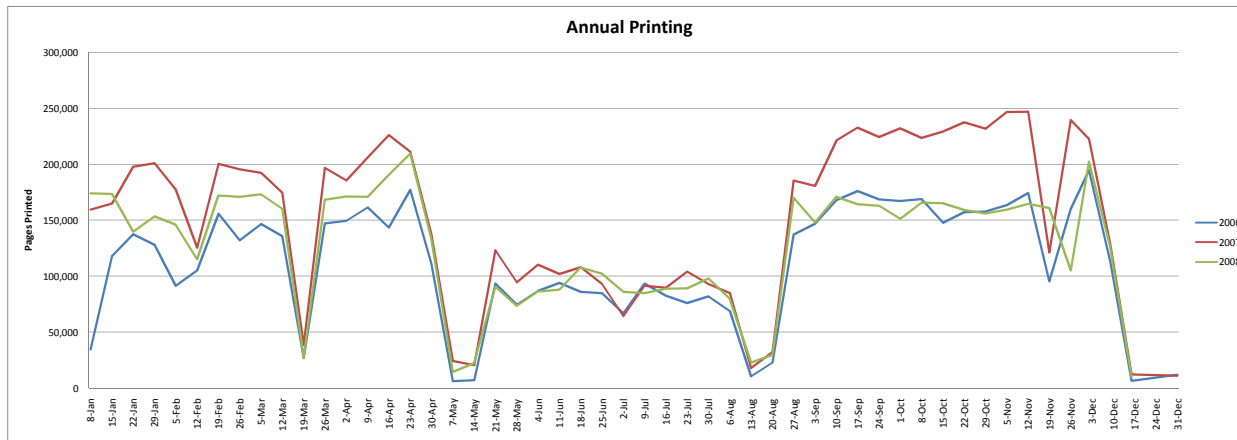
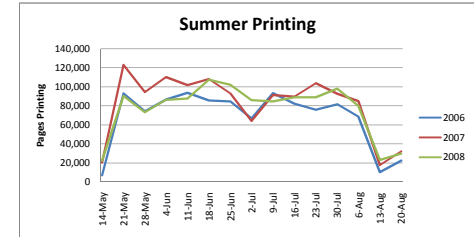
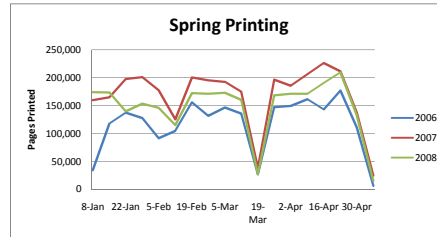
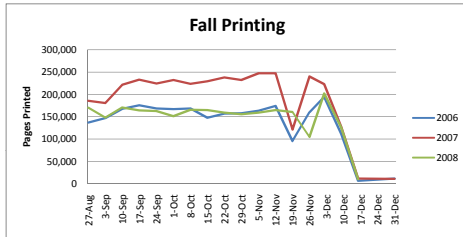
Week	Number of Pages Printed			% difference		
	2006	2007	2008	06/07	07/08	
27-Aug	137,156	185,571	170,029	35.3%	-8.4%	
3-Sep	146,856	180,581	147,931	23.0%	-18.1%	
10-Sep	167,817	221,133	170,961	31.8%	-22.7%	
17-Sep	176,064	232,797	164,169	32.2%	-29.5%	
24-Sep	168,445	224,270	162,908	33.1%	-27.4%	
1-Oct	167,057	232,252	151,209	39.0%	-34.9%	
8-Oct	168,925	223,594	165,681	32.4%	-25.9%	
15-Oct	147,636	229,308	165,019	55.3%	-28.0%	
22-Oct	157,171	237,600	159,272	51.2%	-33.0%	
29-Oct	157,695	231,918	155,908	47.1%	-32.8%	
5-Nov	163,514	246,771	159,371	50.9%	-35.4%	
12-Nov	174,124	246,990	164,711	41.8%	-33.3%	
19-Nov	95,310	121,272	160,847	27.2%	32.6%	
26-Nov	159,846	239,555	105,153	49.9%	-56.1%	
2-Dec	194,539	222,582	202,225	14.4%	-9.1%	
9-Dec	112,325	127,880	126,437	13.8%	-1.1%	
16-Dec	6,453	12,204	10,334	89.1%	-15.3%	
31-Dec	<u>11,825</u>	<u>11,178</u>		<u>-5.5%</u>	<u>-100.0%</u>	
Total	2,512,758	3,427,456	2,542,165	Avg. % Change	36.4%	-25.8%

Spring

Week	Number of Pages Printed			% difference		
	2006	2007	2008	06/07	07/08	
8-Jan	34,520	159,668	173,945	362.5%	8.9%	
15-Jan	117,820	164,981	173,563	40.0%	5.2%	
22-Jan	137,297	197,746	139,655	44.0%	-29.4%	
29-Jan	127,913	200,986	153,484	57.1%	-23.6%	
5-Feb	91,417	177,413	146,066	94.1%	-17.7%	
12-Feb	105,056	125,581	115,192	19.5%	-8.3%	
19-Feb	155,759	200,405	172,122	28.7%	-14.1%	
26-Feb	132,016	195,498	170,766	48.1%	-12.7%	
5-Mar	146,582	192,304	173,025	31.2%	-10.0%	
12-Mar	135,543	174,724	160,166	28.9%	-8.3%	
19-Mar	26,902	38,517	27,570	43.2%	-28.4%	
26-Mar	147,021	196,607	168,268	33.7%	-14.4%	
2-Apr	149,436	185,630	171,139	24.2%	-7.8%	
9-Apr	161,509	206,100	170,892	27.6%	-17.1%	
16-Apr	143,285	226,213	190,572	57.9%	-15.8%	
23-Apr	177,055	211,175	209,416	19.3%	-0.8%	
30-Apr	111,020	137,514	132,887	23.9%	-3.4%	
7-May	<u>6,189</u>	<u>24,439</u>	<u>14,714</u>	<u>294.9%</u>	<u>-39.8%</u>	
Total	2,106,340	3,015,501	2,663,442	Avg. % Change	43.2%	-11.7%

Summer

Week	Number of Pages Printed			% difference		
	2006	2007	2008	06/07	07/08	
14-May	7,080	20,493	22,471	189.4%	9.7%	
21-May	93,335	123,121	90,535	31.9%	-26.5%	
28-May	74,426	94,522	73,395	27.0%	-22.4%	
4-Jun	86,903	110,370	86,422	27.0%	-21.7%	
11-Jun	93,957	102,044	87,898	8.6%	-13.9%	
18-Jun	85,879	108,209	107,595	26.0%	-0.6%	
25-Jun	84,735	93,184	102,302	10.0%	9.8%	
2-Jul	66,858	64,259	86,080	-3.9%	34.0%	
9-Jul	93,465	91,519	84,760	-2.1%	-7.4%	
16-Jul	82,514	89,743	88,938	8.8%	-0.9%	
23-Jul	75,994	104,007	89,064	36.9%	-14.4%	
30-Jul	81,910	93,035	98,023	13.6%	5.4%	
6-Aug	68,693	85,063	80,098	23.8%	-5.8%	
13-Aug	10,470	17,915	23,043	71.1%	28.6%	
20-Aug	<u>20,639</u>	<u>32,363</u>	<u>29,849</u>	<u>43.0%</u>	<u>-7.8%</u>	
Total	1,028,858	1,229,847	1,150,473	Avg. % Change	19.5%	-6.5%



Total Annual Printing (in pages)		
2006	2007	2008
5,647,956	7,672,804	6,356,080

Annual Printing Increase (06-07)
2,024,848 pages = 35.9%

Annual Printing Increase (07-08)
-1,316,724 pages = -17.2%