



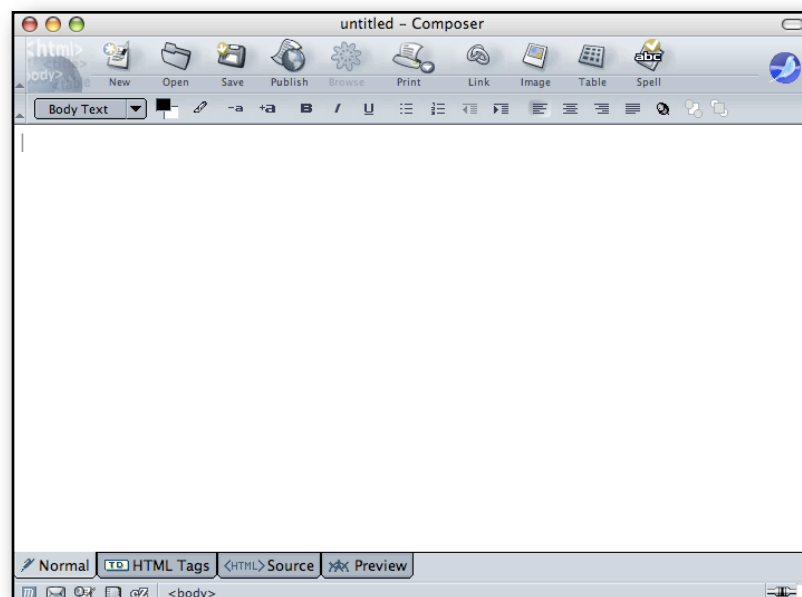
Northeastern
Illinois
University

5500 NORTH ST. LOUIS AVENUE
CHICAGO, ILLINOIS 60625-4699
STUDENT COMPUTING SERVICES
[HTTP://WWW.NEIU.EDU/~SCS](http://www.neiu.edu/~scs)

**Student
Computing
Services**



Web Page Development using SeaMonkey



Please note that this introductory manual has been designed for use in coordination with the **Web Page Development using SeaMonkey** workshop. For a complete listing of currently offered workshops, please refer to <http://www.neiu.edu/scs>.

Student Computing Services
Academic Computing, NEIU
B-107
Web: www.neiu.edu/~scs
Email: scs@neiu.edu
Phone: 773-442-4390

Web Page Development using SeaMonkey Syllabus

Course Description:

This workshop will introduce basic concepts regarding web page development on a Macintosh OS X system. Using Mac OS X, we will explore how to create a web page, upload it into an NEIU account, and how to view the web page from a browser.

Prerequisites:

Basic understanding of Macintosh OS X or attendance to the Introduction to Macintosh workshop. Basic knowledge of the Internet and Internet Applications.

Goal(s) of the Workshop:

Participants should leave with an understanding of how to create their own web page using Netscape Composer on a Macintosh system. This workshop can also serve as a foundation for the **Web Page Development using iWeb** workshop.

Course Content:

- create an HTTP directory
- create a blank web page
- create links
- insert pictures
- use ftp to upload files
- preview the web page online
- editing an existing web page.

Disclaimer:

The **Web Page Development using SeaMonkey** workshop is recommended for people unfamiliar with web page development. Basic knowledge of the Macintosh Operating System is necessary in order to maximize results from this workshop. The screen captures found in this document are based on the Macintosh Operating System X.

Student Computing Services
Academic Computing, NEIU
B-107
Web: www.neiu.edu/~scs
Email: scs@neiu.edu
Phone: [773-442-4390](tel:773-442-4390)

Table of Contents

About SeaMonkey Composer.....	3
Beginning a New Composer Document.....	4
Inserting and Manipulating Text.....	5
Fonts, Font Sizes, and Colors.....	5
Changing the Web Page Background.....	6
Images.....	7
To insert an image.....	7
Manipulating an Image.....	8
Links.....	9
• External Links	
• Internal Links	
• Creating an Anchor	
• Creating an Internal Link	
• E-Mail Links	
Saving Your Web Page.....	12
Launching Fetch.....	13
Transferring Files to Your NEIU Account.....	14
Creating Your HTTP Directory and Fixing Permissions.....	16
Additional Assistance with SeaMonkey Composer.....	18
Introduction to Web Page Development Review.....	19
Conclusion of Document.....	19
Information Resources.....	19

About SeaMonkey Composer

SeaMonkey Composer is a free HTML editor. It is part of the SeaMonkey application. Composer is a WYSIWYG (what you see is what you get) HTML editor which enables people who have little or no prior knowledge of the HTML language to create web pages. Netscape is available for download at www.mozilla.org for Windows, Linux, or Macintosh.

This tutorial will demonstrate the basics of SeaMonkey Composer. The purpose of this document is to enable users to create a simple HTML document; it is not intended to teach advanced web design techniques.

Remember that you always have access to the help menu. In addition, placing the arrow cursor over the buttons in SeaMonkey Composer will provide information about its function.

A few words regarding web page creation:

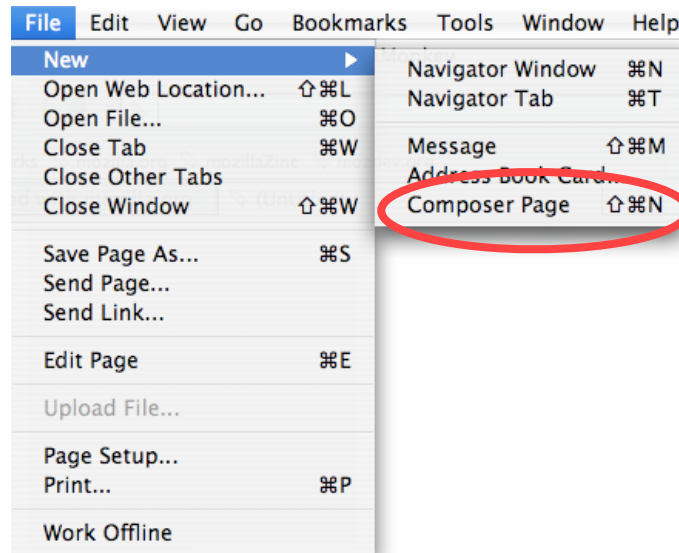
- Plan your page/site before you begin. Make sure that you have all the images and text files before you start.
- To minimize the possibility of broken links, keep all of your web files in a single folder.
- Keep graphics files small. Large graphics will cause your web pages to load slowly.
- Preview your web pages in multiple web browsers (such as Internet Explorer, Safari, etc . . .) to ensure that your page appears consistent on different programs.

Beginning a New Composer Document

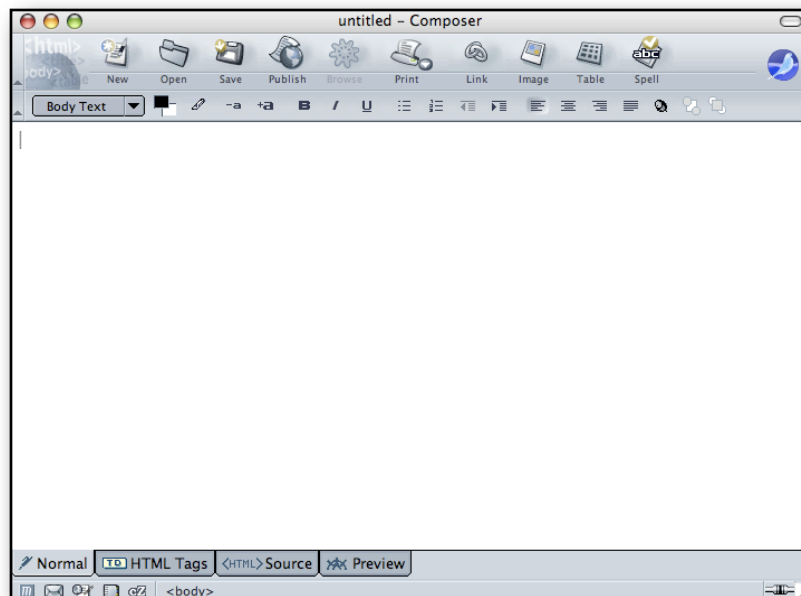
To begin **SeaMonkey Composer**, launch **SeaMonkey**. A web browser window will appear on the screen by default. To access **Composer**, click on:



File --> New --> Composer Page



A blank **Composer** document will appear on the screen. This is where you will create your web page. **Composer** is designed to be easy to use and its commands are set up in a similar manner and style as a word processor.

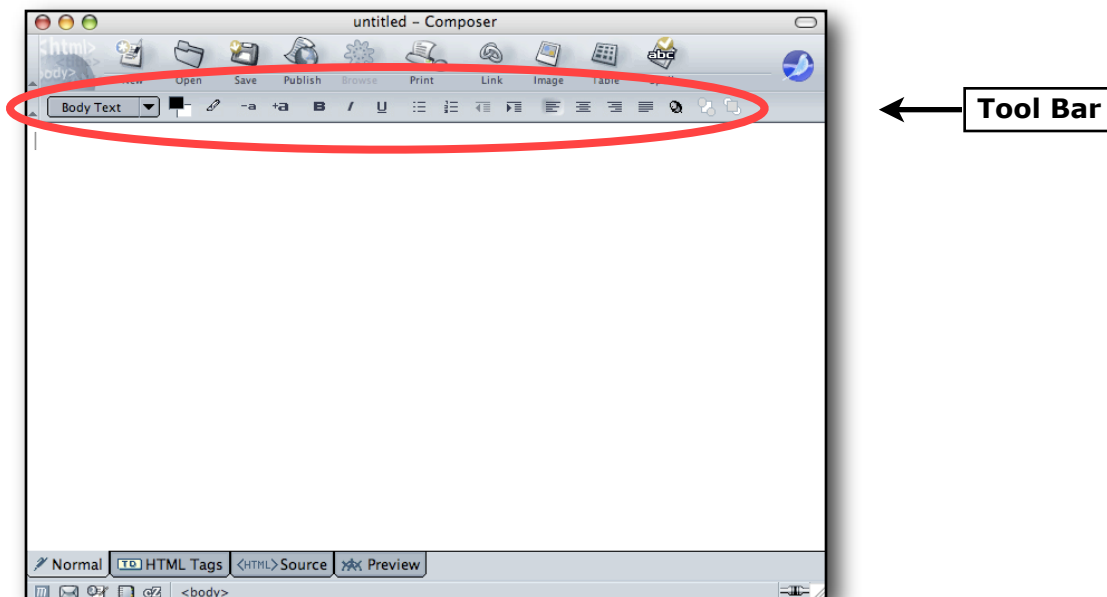


Inserting and Manipulating Text

You may enter text into the document simply by typing on the keyboard. The text will wrap around the screen just like a word processing program. Pressing the **[Return]** key will insert a hard carriage return and place the cursor at the beginning of the next line.

Fonts, Font Sizes, and Colors

You may manipulate the font, font size and style, and the font color via the **Format** menu. You may also manipulate the text by using the tool bar:



If you wish to manipulate text which has already been typed, you must highlight the text by selecting it first before changing its size, style, or color. This behavior is consistent with how standard word processors function.

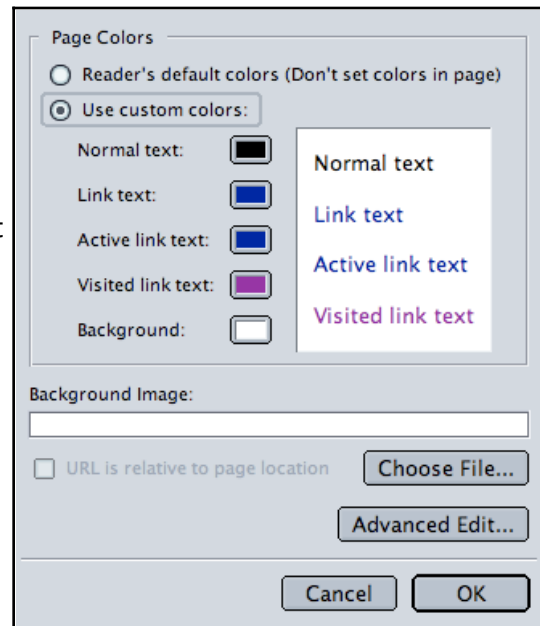
Changing the Web Page Background

SeaMonkey Composer allows you to change the background color of your web page.

To change the background, click on **Format** menu and choose **Page Colors and Background**.

In the following window, you may set the webpage to use the **Reader's default colors** or to **Use custom colors**.

If you elect to use custom colors, click on the colored boxes next to the categories (normal text, link text, etc . . .) to choose a specific color for that category.



You may then choose any color which appears in the color palette. Once you have chosen a color, click on the **OK** button.

Feel free to experiment with different color combinations until you find one which suits your tastes and your web page.



Images

To insert an image in a **Composer** document, you must first have the image file saved on the hard drive, diskette, CD, or some other volume. Use only a **.gif** or **.jpg** format for images intended for the internet. **.gif** files work well for images comprised of primary colors. **.jpg** files are suitable for photo-like images. Your images can come from a scanner, a digital camera, or be downloaded from the internet.

To Insert an Image

- place the I-bar cursor in the composer document where you want the image to appear.
- click on the Image button in the tool bar

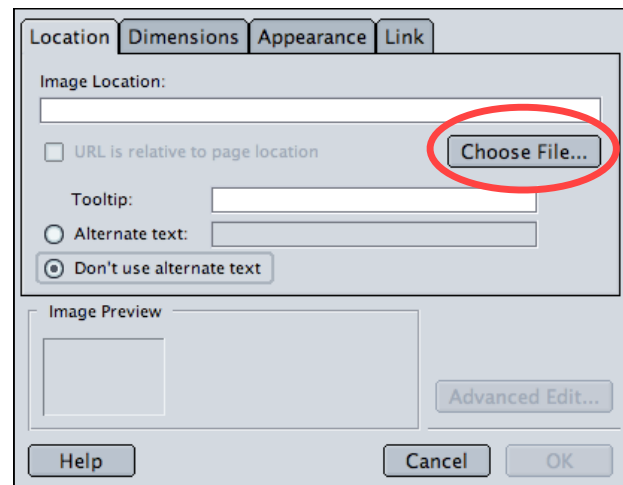


(You may also use the menu bar to insert a picture file by clicking on **Insert --> Image...**)

The following window will appear.

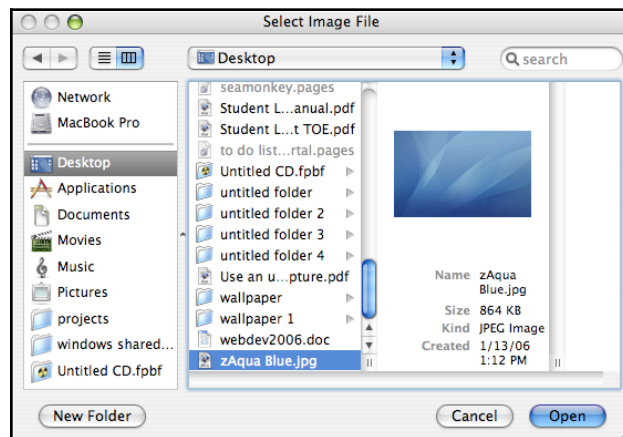
- Click on the **Choose File** button to select the image you wish to insert into the web page.

(**Alternate text** refers to text which shows up on the webpage in place of web images which do not load properly. If you do not wish to have alternate text appear on the webpage, click on the radio button next to the option **Don't use alternate text.**)



- A standard **Open** dialog box will appear. Select the image file and click **Open**.
- Then, in the **Composer Insert Image** window, click on the button **OK**.

Note: In order to simplify your web page file structure and to minimize the possibility of broken links, keep all your html files and image files in a single folder.



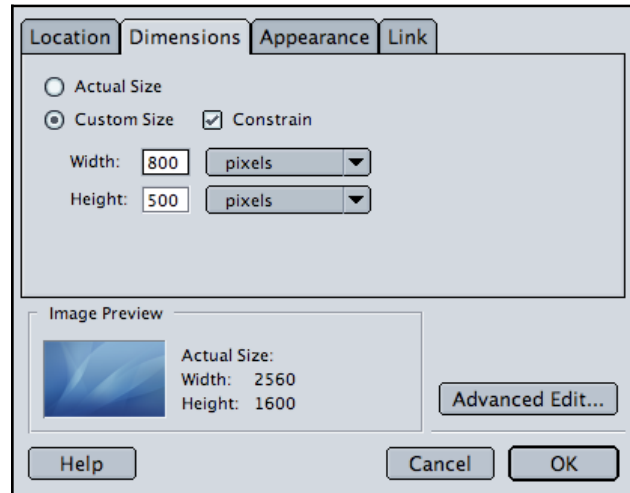
Manipulating an Image

You may change the height and width of an image by double-clicking it.

In the subsequent **Image Properties** window, click on the **Dimensions** tab and choose **Custom Size**.

Enter the desired image dimensions and then click on the **OK** button. The image will now be resized according to the dimension changes you entered in this window.

The **Constrain** option allows you to resize your pictures proportionally.



Important: Web pages do not truly contain your image. They merely point to your image file location. When uploading your web pages to a server, be certain to upload the image files as well as the .html web pages.

Links

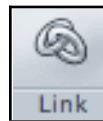
One of the most important features of a web page is that it contains links to other sites on the web. This allows the computer user to quickly jump to other web pages to view additional information.

External Links

An external link is a link which takes the user from one web page to another. For example, a link which takes you from the Chicago Sun-Times homepage to the Amazon online store.

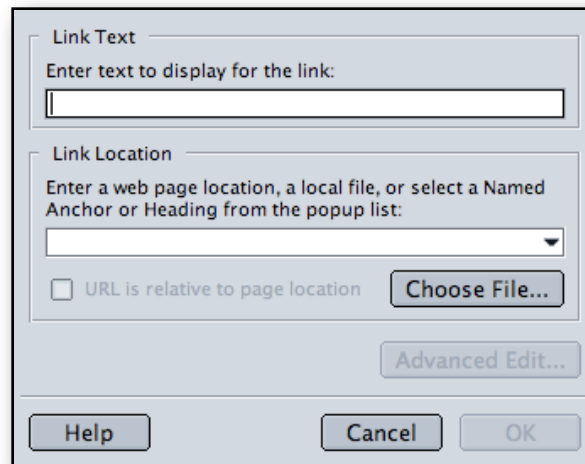
To create a link, first choose the text (or image) on your web page which will serve as the link. Highlight the text (or click on the image) to select it.

Next, click on the **Link** button on the tool bar.



Alternatively, you may also click on the **Insert** menu and choose **Link**.

The following dialog box will appear:

A dialog box titled "Link" with a light gray background. It has two main sections: "Link Text" and "Link Location". The "Link Text" section has a text input field with the prompt "Enter text to display for the link:". The "Link Location" section has a dropdown menu with the prompt "Enter a web page location, a local file, or select a Named Anchor or Heading from the popup list:". Below the dropdown is a checkbox labeled "URL is relative to page location" and a "Choose File..." button. At the bottom right of the dialog is an "Advanced Edit..." button. At the very bottom are three buttons: "Help", "Cancel", and "OK".

Enter the web page address. For example, to link your web page to the Northeastern Illinois University homepage, you would enter:

<http://www.neiu.edu>

Click on the **OK** button when finished. The selected text or image on the web page is now a link to <http://www.neiu.edu>

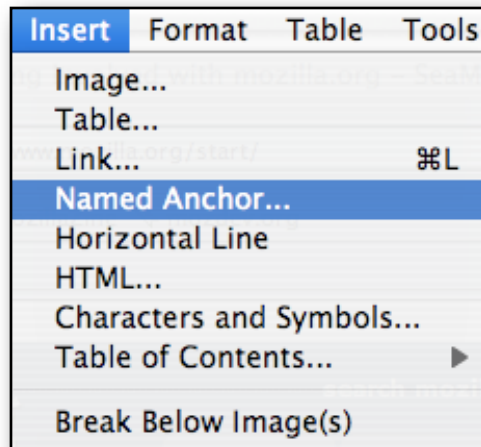
Internal Links

Internal links refer to links which take the user to another section of the same web page. The method to create an internal link is slightly different than that of creating an external link.

Creating an Anchor

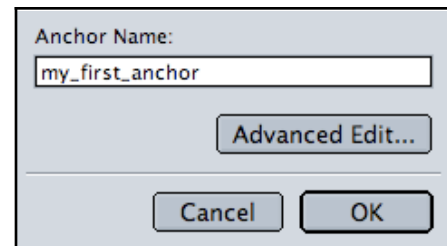
Before you can create an **internal link**, you must first locate the destination that you want the link to jump to. Click on that location so that the I-bar cursor appears there.

Next, click on the **Insert** menu and select **Named Anchor**.



A dialog box will appear. Enter a name for the anchor.

Choose a name which will identify its location to you.



A little anchor image will appear on the page. This anchor image will mark the location of the anchor you just created.



Please note that the small anchor icon will not be visible when the page is viewed with a web browser. It is only visible when viewed with Composer.

Creating an Internal Link

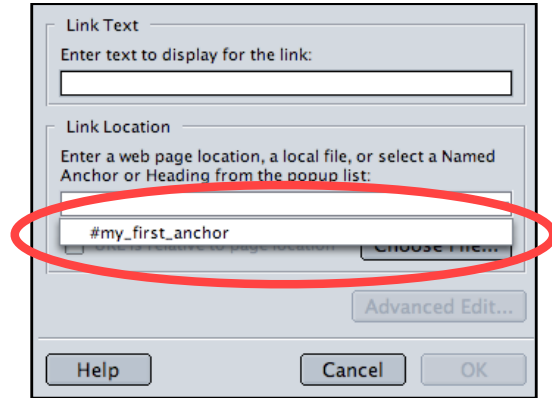
To create a link that will jump to the anchor you just created, select the text (or image) you want to be the link. Click on the **Link** button.



The **Link Properties** window will appear.

Instead of typing in the web page address as the destination, you may click on the down arrow to select the anchor. If you have more than one anchor on the page, they will all be available in the menu.

After you click **OK**, the internal link will have been created.

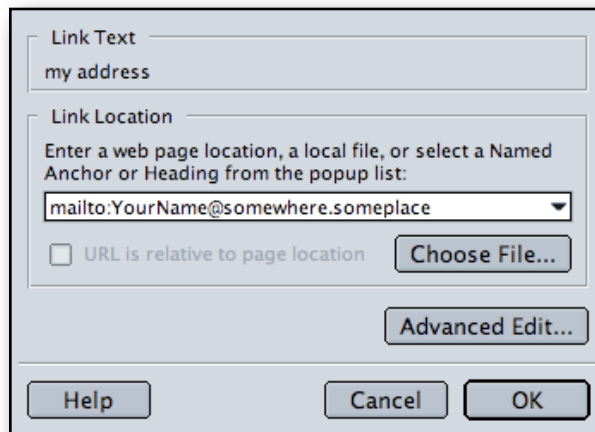


E-Mail Links

You have the option of creating a link on your web page which would allow the user to write to your e-mail address. The procedure to create an e-mail link is very similar to the procedure for creating an internal or external link.

After selecting the text or image which you want to serve as the e-mail link, click on the **Link** button on the tool bar.

In the **Link Properties** window, enter:
<mailto:YourAddress@somewhere.someplace>



When the user clicks on this link, the computer will automatically launch the user's default e-mail program and enter your e-mail address as the recipient. This type of link does not work with web-based e-mail programs such as NEIU's WebMail system.

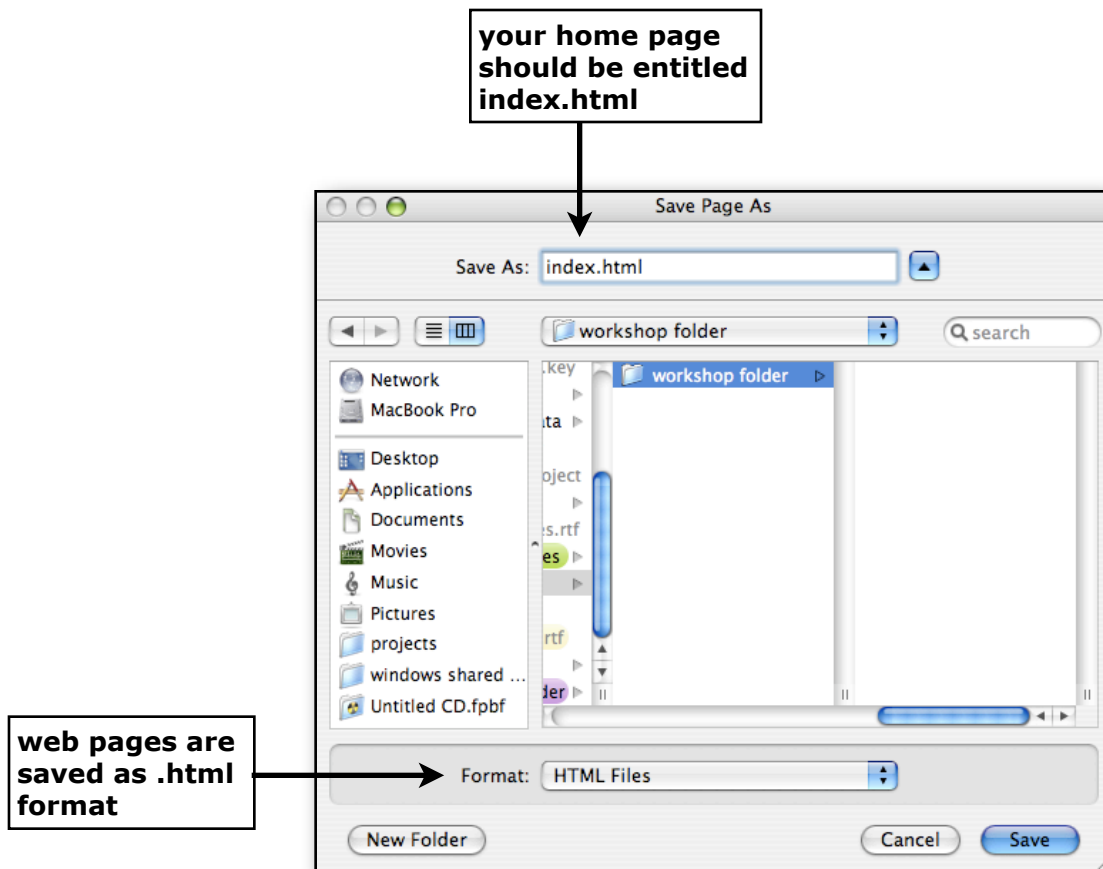
Saving Your Web Page

Be sure to save your file frequently, even before you complete your web page. This will help ensure that your work will not be lost in the event of a computer failure.

To save the web page, click on **File --> Save As**

The first time you save the file, **Composer** will ask you to enter a page title. The title will appear in the title bar of the web page and will also be used to identify it when a user bookmarks your page.

A standard save file dialog will appear. Save your file. If you are saving a page which is intended to be your home page (the first page your online visitors will see), it is suggested that you call your file **index.html**. Be sure to select the **Format** for the web page to be **HTML Files**.



Launching Fetch

To upload your file(s) to a server, you will need to know the host name of the server, your username, and password. In order to view your web page on the Internet, the files will need to be uploaded to a directory named **http**.

You will be using the same username and password as the one assigned to you for NEIU webmail. If you do not know your NEIU username and password, please visit our department website at www.neiu.edu/~scs and click on the link "Student Email Account Lookup."

In our Macintosh computer labs we use the ftp program **Fetch**. To launch **Fetch**, click on the icon in the dock.

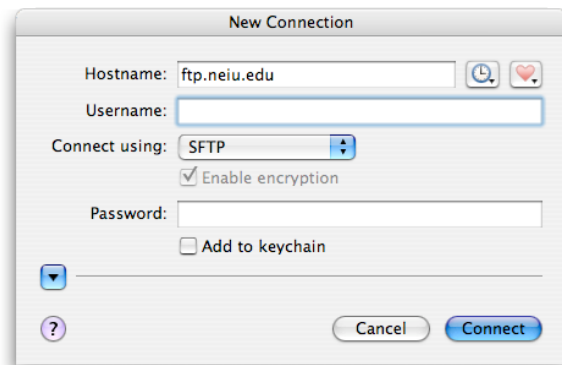


A window will appear on your screen. Enter the following settings:

Host: **ftp.neiu.edu**
User ID: ***your NEIU username***
Password: ***your neiu password***

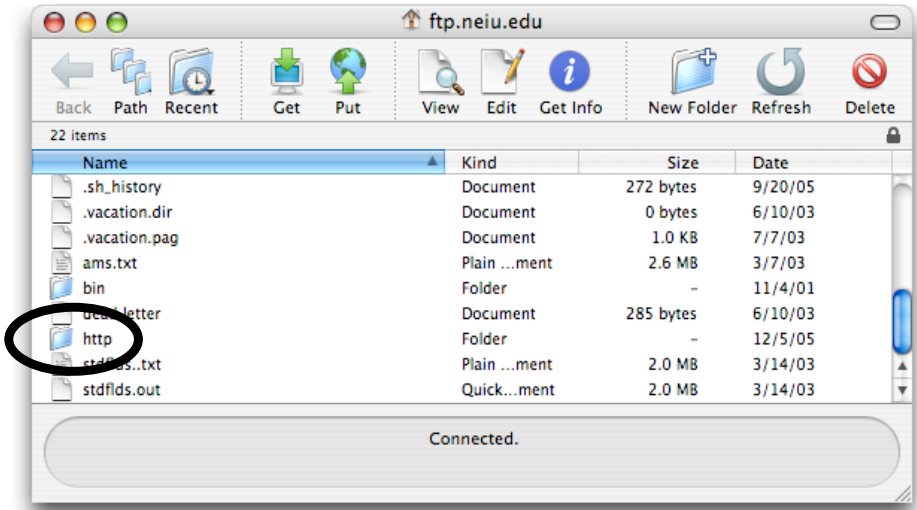
Note: the username and password are case-sensitive.

Do not select **Add to keychain**.
When finished, click on the **Connect** button.

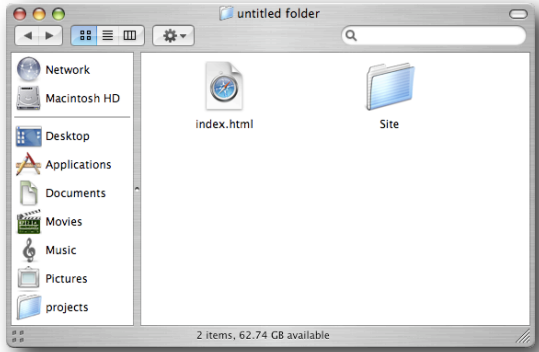
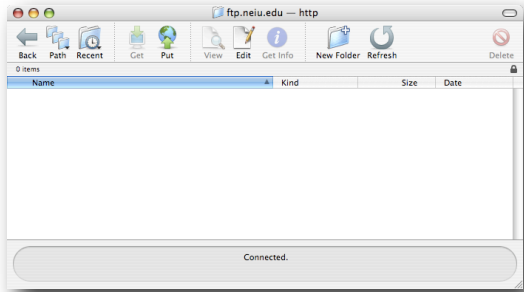


Transferring Files to Your NEIU Account

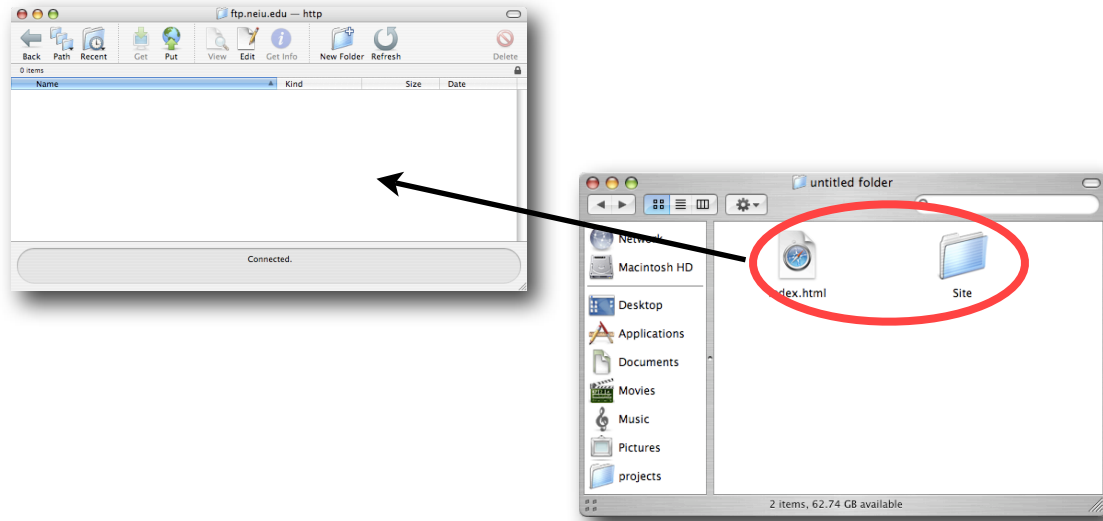
After you successfully connect to your NEIU account in **Fetch**, a window similar to the one shown below will appear. It lists the files that are stored in your NEIU account. Locate the **http** directory you created earlier in this manual. Double-click on **http** to open it. If your **http** folder has a **home.htm** file which you did not create, delete it so it does not interfere with your **index.html** file. To delete a file, click on it to select it and then click on the **Delete** button situated in the **Fetch** toolbar.



After opening your **http** directory, drag the **Fetch** window to one side of the screen. Then locate the web page files within the Macintosh operating system and adjust the windows on your screen so you can see both the **Fetch** window and your web page files at the same time.



Drag your web page files (**index.html** and the **Sites** folder) to the **Fetch** window. Your web page files will be copied from the computer to the **http** directory in your NEIU account. Depending on the size and number of files and the speed of your Internet connection, the file transfer may take a few moments to complete.



After the files have been uploaded to your **http** directory within your NEIU account, you may view your newly-created web page by launching a web browser and typing in the address:

<http://www.neiu.edu/~your-neiu-account-username>

The ~ (tilde) key is found beneath the **ESC** key on the keyboard. For instance, if your username is jsmith, then your web page address will be:

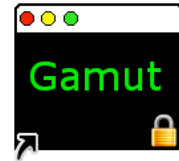
<http://www.neiu.edu/~jsmith>

By default, the web browser looks for a file called index.html. The index file will be displayed on the screen for you to view. Please remember that **index.html** and **Sites** must be in the **http** folder in order to be accessible from the Internet.

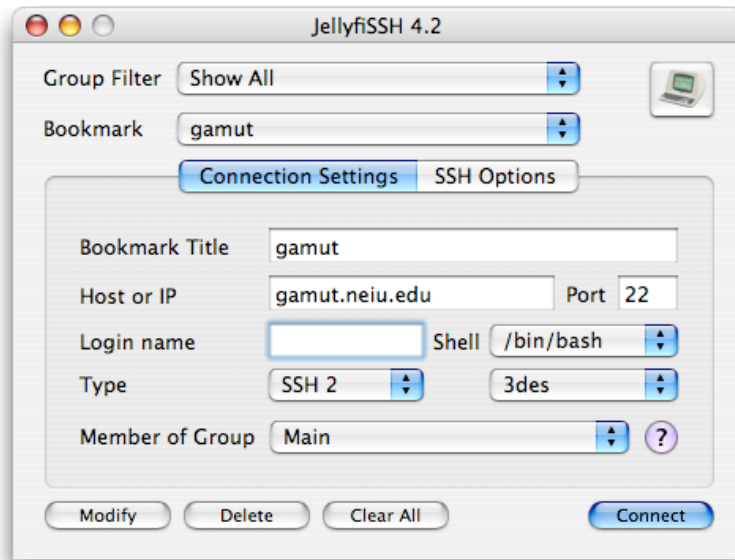
Creating Your HTTP Directory and Fixing Permissions

If you do not have an **http** directory in your NEIU account or if you need to approve the permissions of the files within your **http** directory, please follow the instructions below. You do not need to follow these directions each and every time you publish a web page.

Click on the **Gamut** icon in the dock. It will open an SSH session to the **Gamut** server.

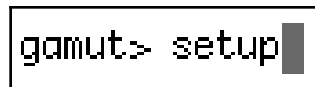


The window will ask you to enter your login name. Enter your NEIU username and click on the **Connect** button.



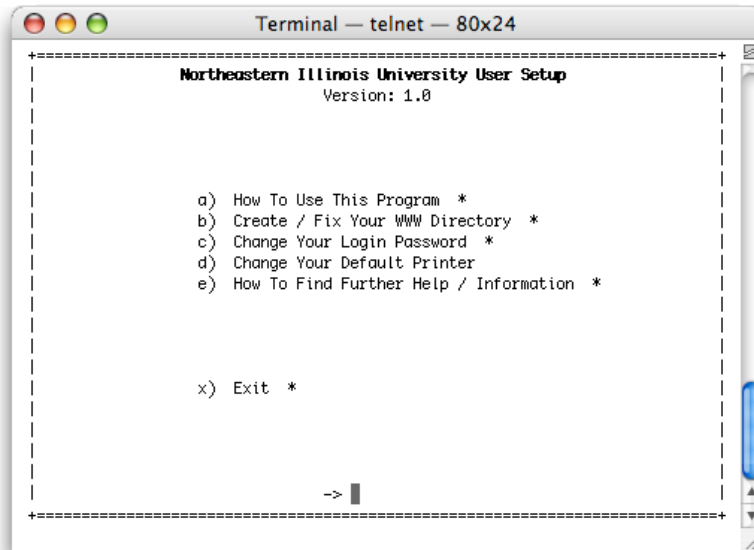
A new window will appear and ask you to enter your NEIU password. Enter your password and press the **Return** key. Note: When you type your password, it will not appear on the screen.

After you successfully log into the server, you will be at the gamut prompt. Type the word **setup** and press the **Return** key.



The **setup** program does the following:

1. If you do not have an **http** folder in your account, **setup** will create one for you.
2. If you are unable to view your web page files online, **setup** will set file and directory permissions to allow anyone to view the files stored in the **http** folder.



Choose option **B** by typing the letter "B" via the keyboard. The computer will return the message **Fixing World-Wide-Web permissions - One moment**. After several seconds, the computer will then report that:

```
Your World-Wide-Web permissions are now set properly to allow network
users to view your home page. NOTE: any file in your http directory is
visible by everyone. You may need to manual adjust permissions on any
file that you wish to restrict access to. See the 'chmod' manual page
for more information about file permissions.

Press any key to continue
```

Press any key to continue.

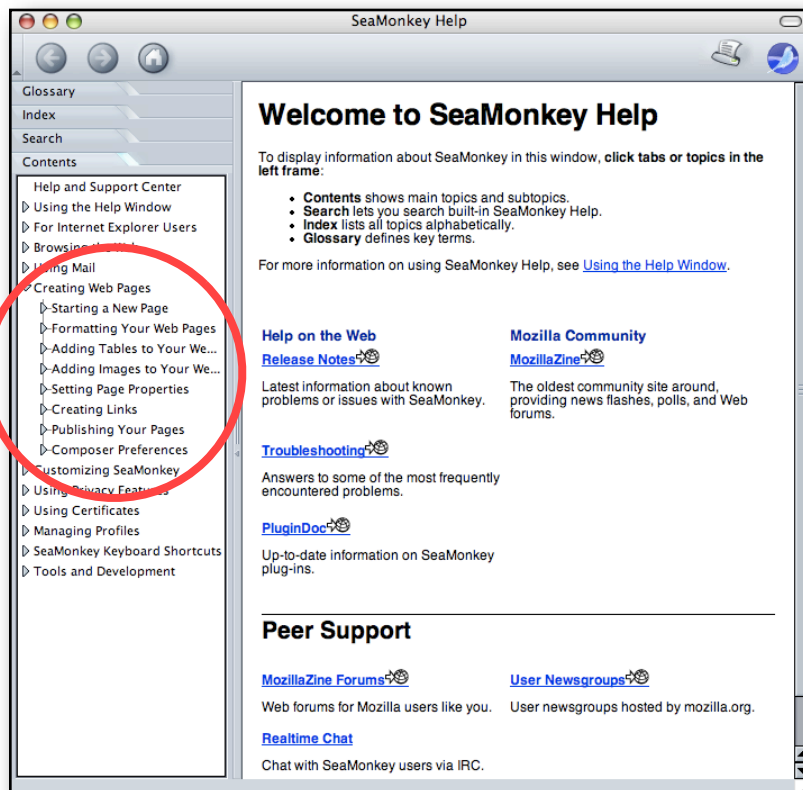
The window will return to the previous options. Choose **X** to exit the **setup** menu. Then type **exit** and press <Return> to exit the SSH session.

You have now successfully created a directory named **http** in your NEIU account. You will store your web page files within the **http** directory and these web pages will be accessible by anyone with an Internet connection.

Additional Assistance with SeaMonkey Composer

SeaMonkey Composer comes with a Help Menu to allow users to learn and use SeaMonkey on their own. Assistance can be accessed from the **Help** menu by selecting **Help and Support Center**.

A help window will appear. The help system will list a series of possible solutions according to subject categories. As you see, there is a heading entitled **Creating Web Pages**.



Web Page Development using SeaMonkey Review

About SeaMonkey Composer.....	3
Beginning a New Composer Document.....	4
Inserting and Manipulating Text.....	5
Fonts, Font Sizes, and Colors.....	5
Changing the Web Page Background.....	6
Images.....	7
To insert an image.....	7
Manipulating an Image.....	8
Links.....	9
Saving Your Web Page.....	12
Launching Fetch.....	13
Transferring Files to Your NEIU Account.....	14
Creating Your HTTP Directory and Fixing Permissions.....	16
Additional Assistance with SeaMonkey Composer.....	18

Conclusion of Document

Academic Computing hopes that this document has been of use to you in familiarizing yourself with web page development on a Macintosh Operating System. Please direct any comments you have concerning our workshops or this document to Academic Computing at B-107, extension 4390.

Information Resources

Information regarding student workshops, documentation, e-mail accounts, and lab locations is available at our website <http://www.neiu.edu/~scs>

Student Computing Services
Academic Computing, NEIU
B-107
Web: www.neiu.edu/~scs
Email: scs@neiu.edu
Phone: [773-442-4390](tel:773-442-4390)