

Identify the major or minor key for each of the following melodic phrases.



Key _____



Key _____

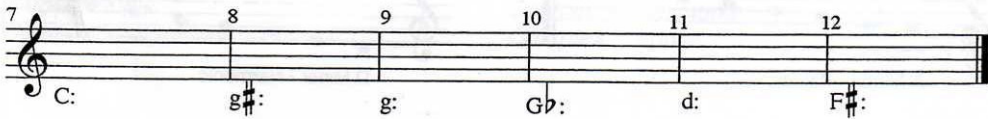


Key _____

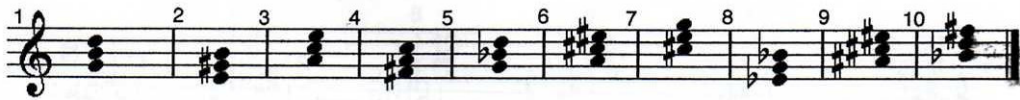


Key _____

On the staff, write the accidentals (sharps and flats) needed to create the key signatures indicated. Large letters equal major keys -- small letters equal minor keys. Be sure to write the accidentals in their correct sequence.



Identify the *quality* of each chord. Use *M* for major, *m* for minor, *+* for augmented, and *o* for diminished.



Identify these intervals:

