

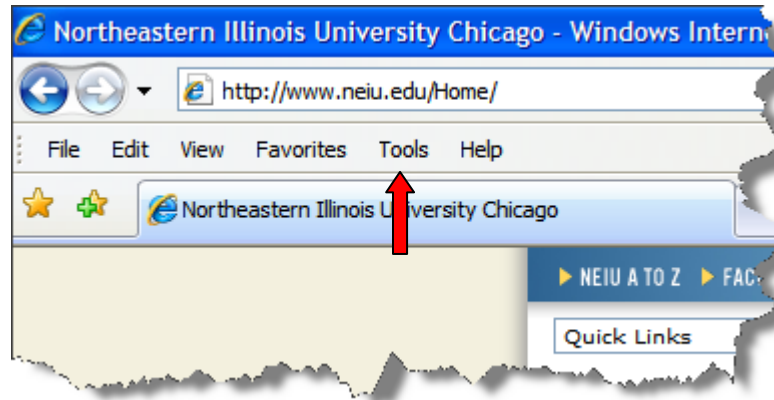
## Enabling Compatibility View in Internet Explorer Version 8.

1. Open Internet Explorer.

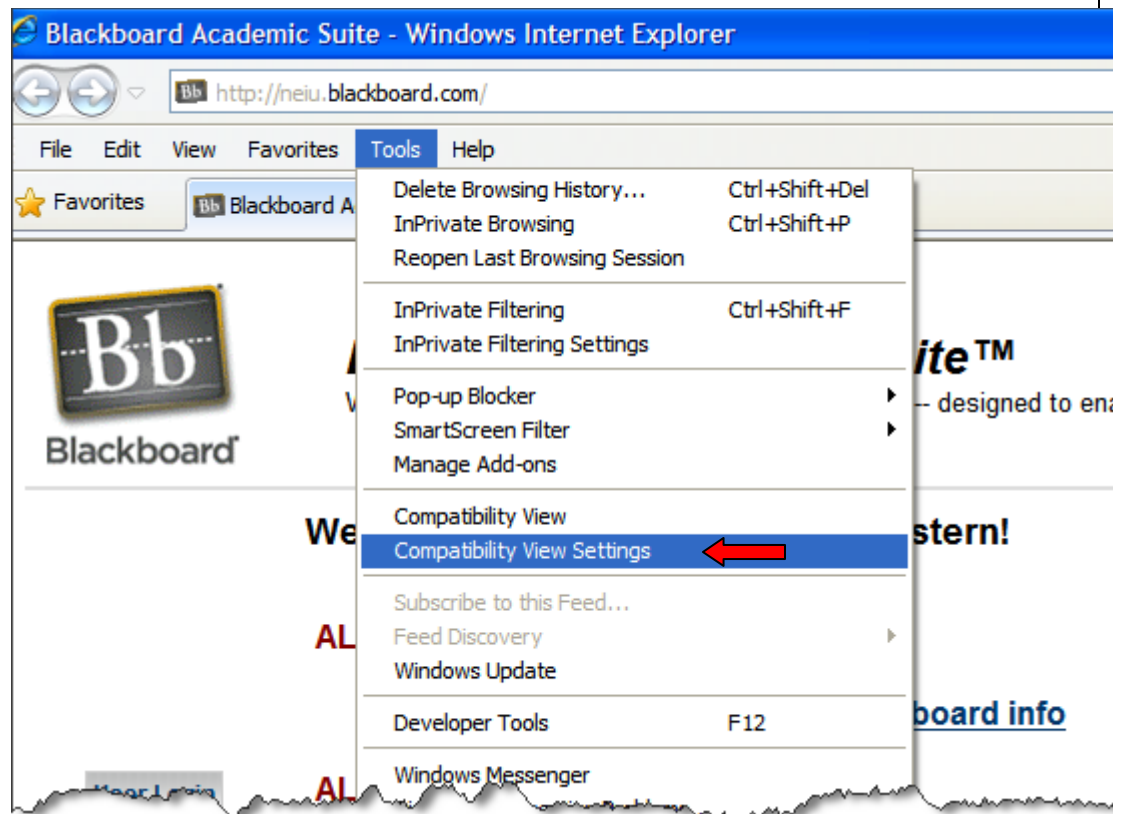


2. Navigate to the menu bar and select **Tools**.

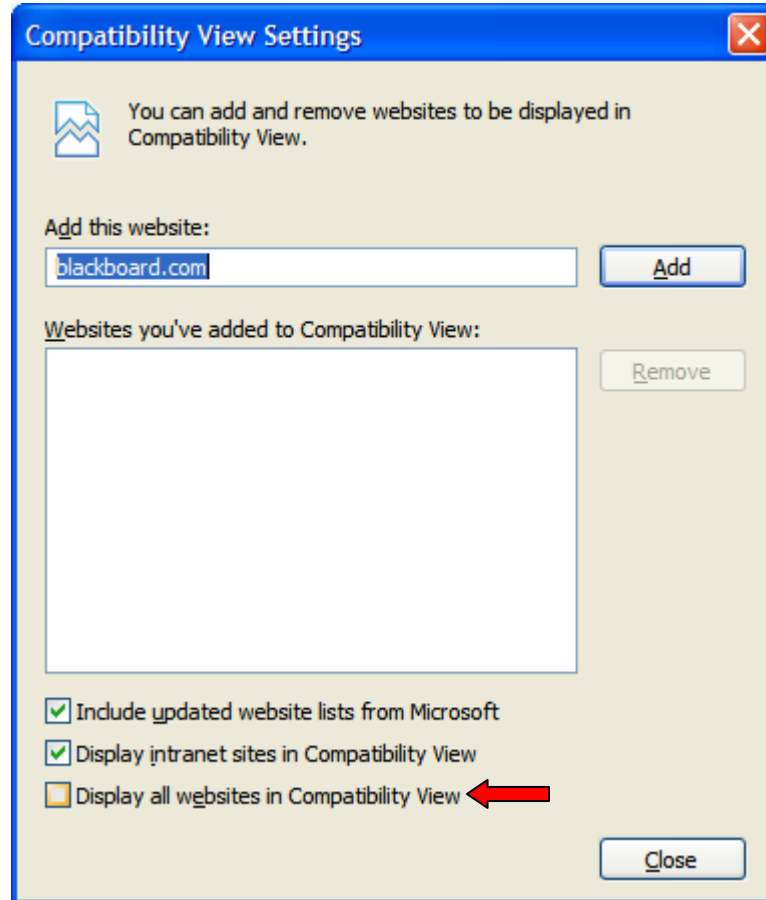
NOTE: if you do not see the menu bar, [Click Here](#).



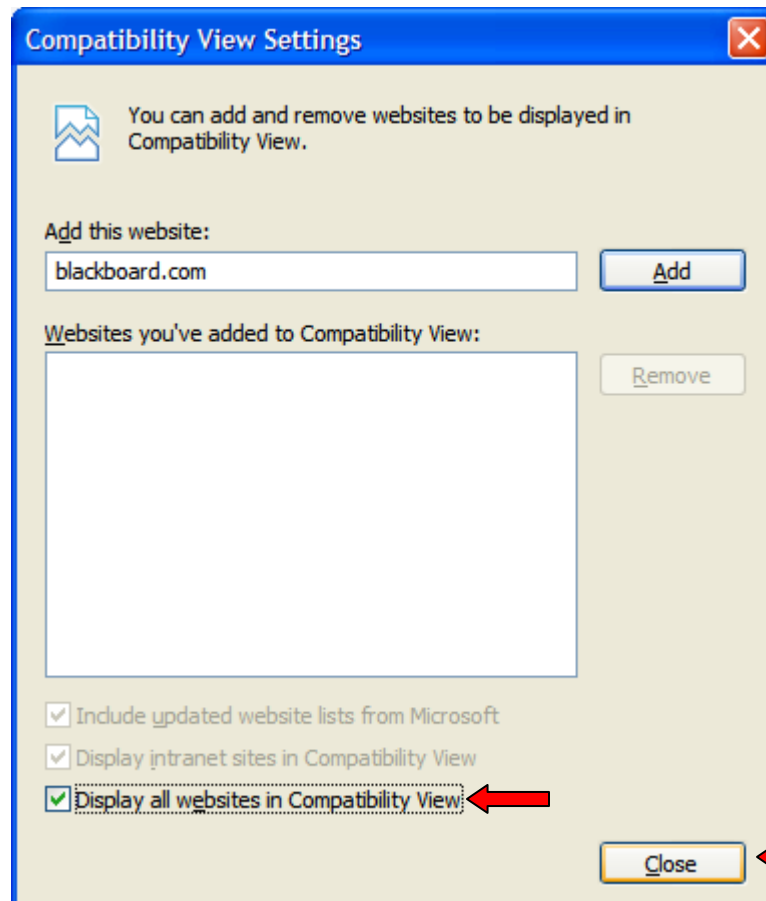
3. Within the **Help** menu, select **Compatibility View Settings**.



4. A window will popup, here you will notice at the bottom, **Display all websites in Compatibility View.**

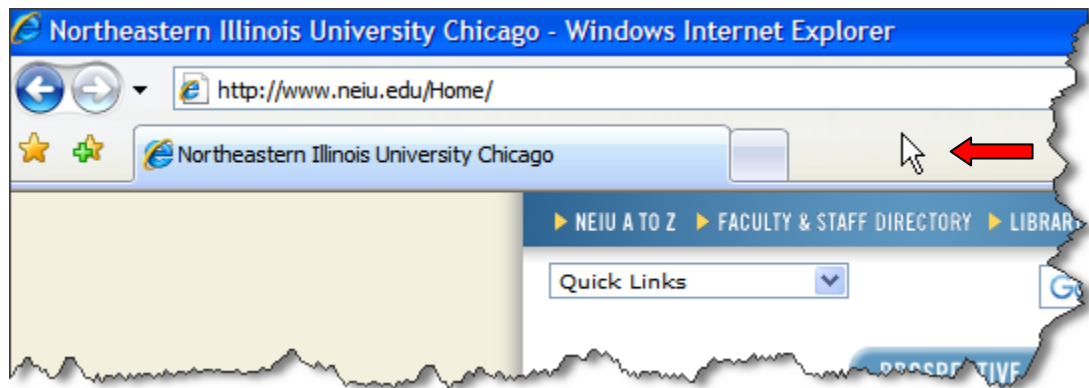


5. Select the checkbox next to **Display all websites in Compatibility View.** Then select **Close.**

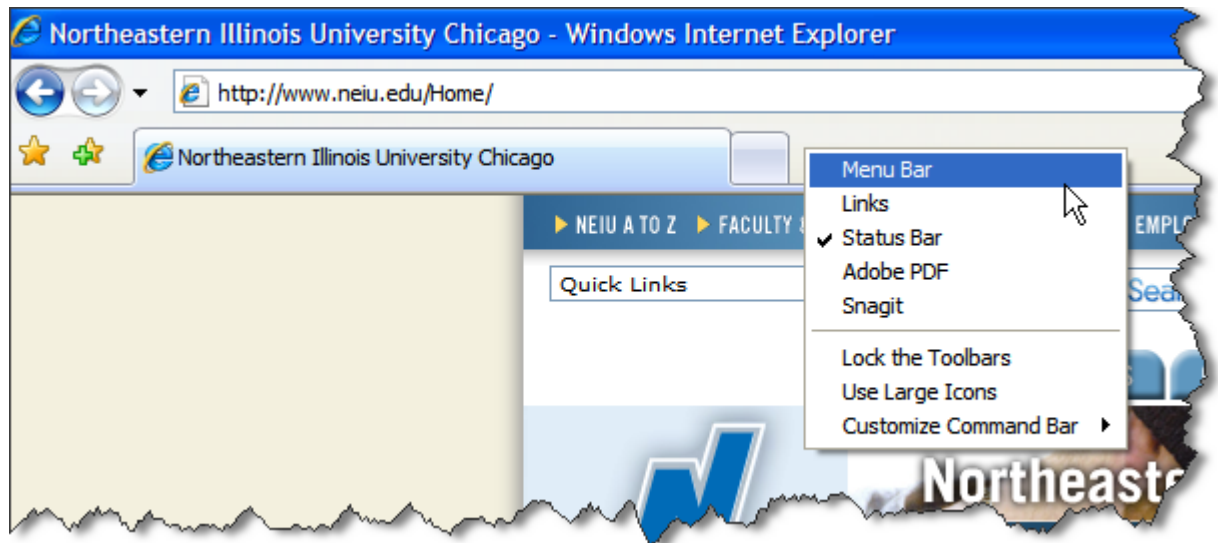


## If the Menu Bar is not present

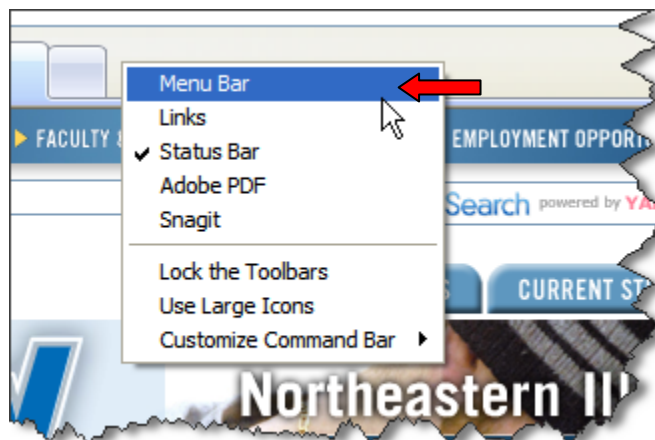
1. Place your cursor over the grey area of the browser.



2. At this point, press your **Right** mouse button and a menu will appear.



3. Select **Menu Bar**.



4. Once you select **Menu Bar**, you will notice that the menu is now present.

[Click Here](#) to navigate back to step 2.

