

State of the University Address

President Sharon K. Hahs
September 23, 2014

Strategic Plan

Mission, Vision, Values

Goals

Action Steps

Annual Workplan

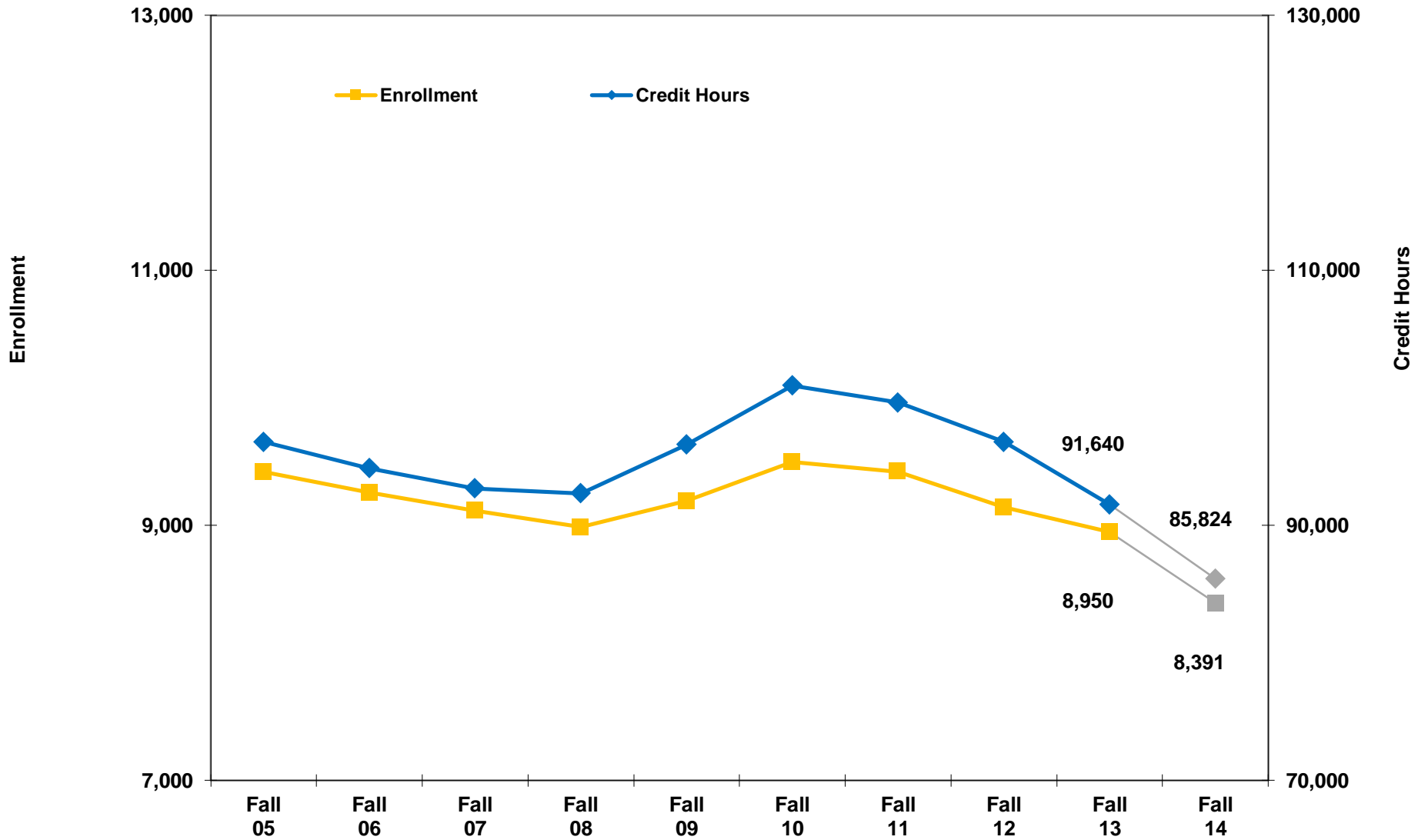
Demonstrating Progress

Results of Annual Workplan

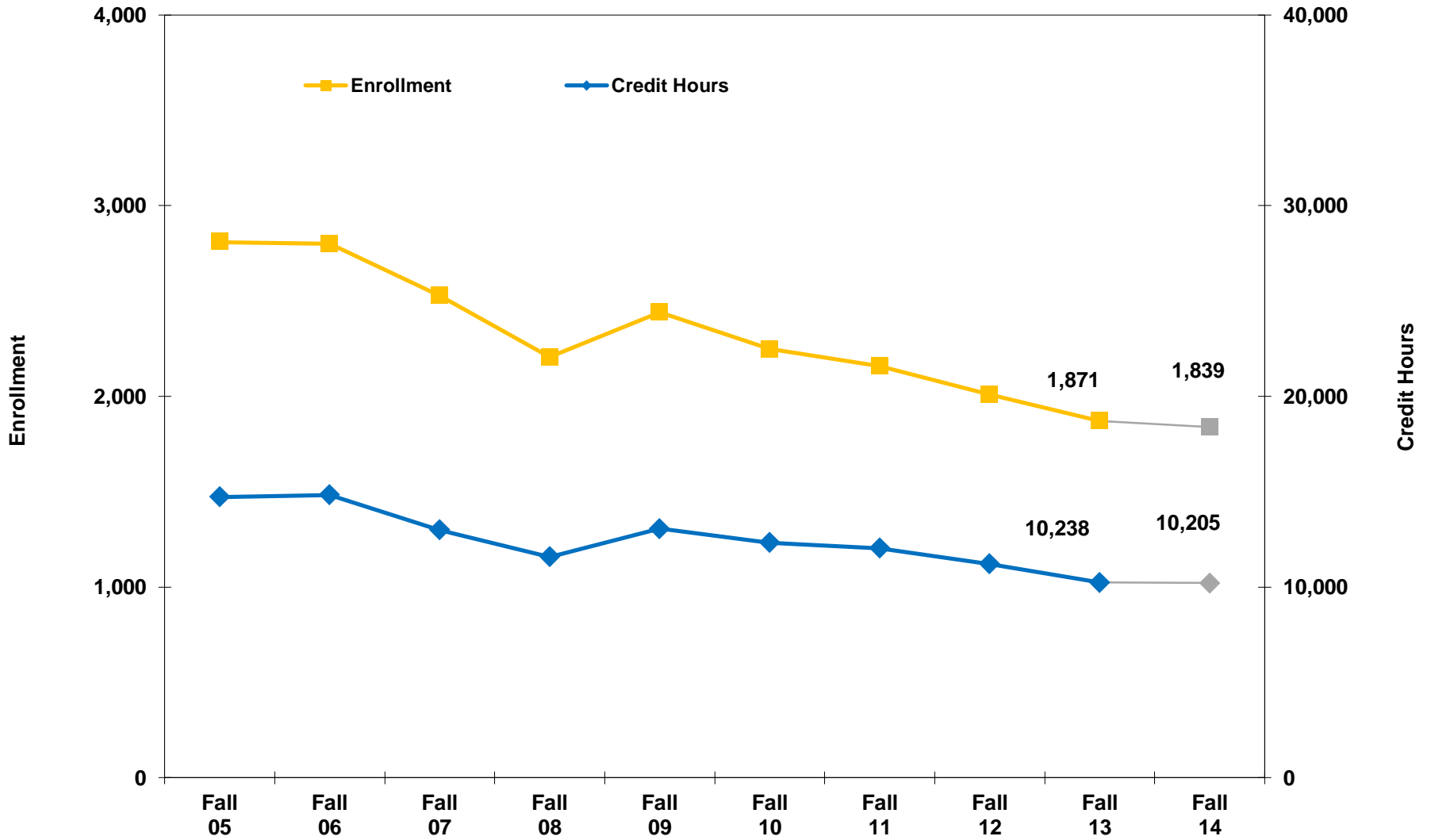
Key Performance Indicators (KPIs)



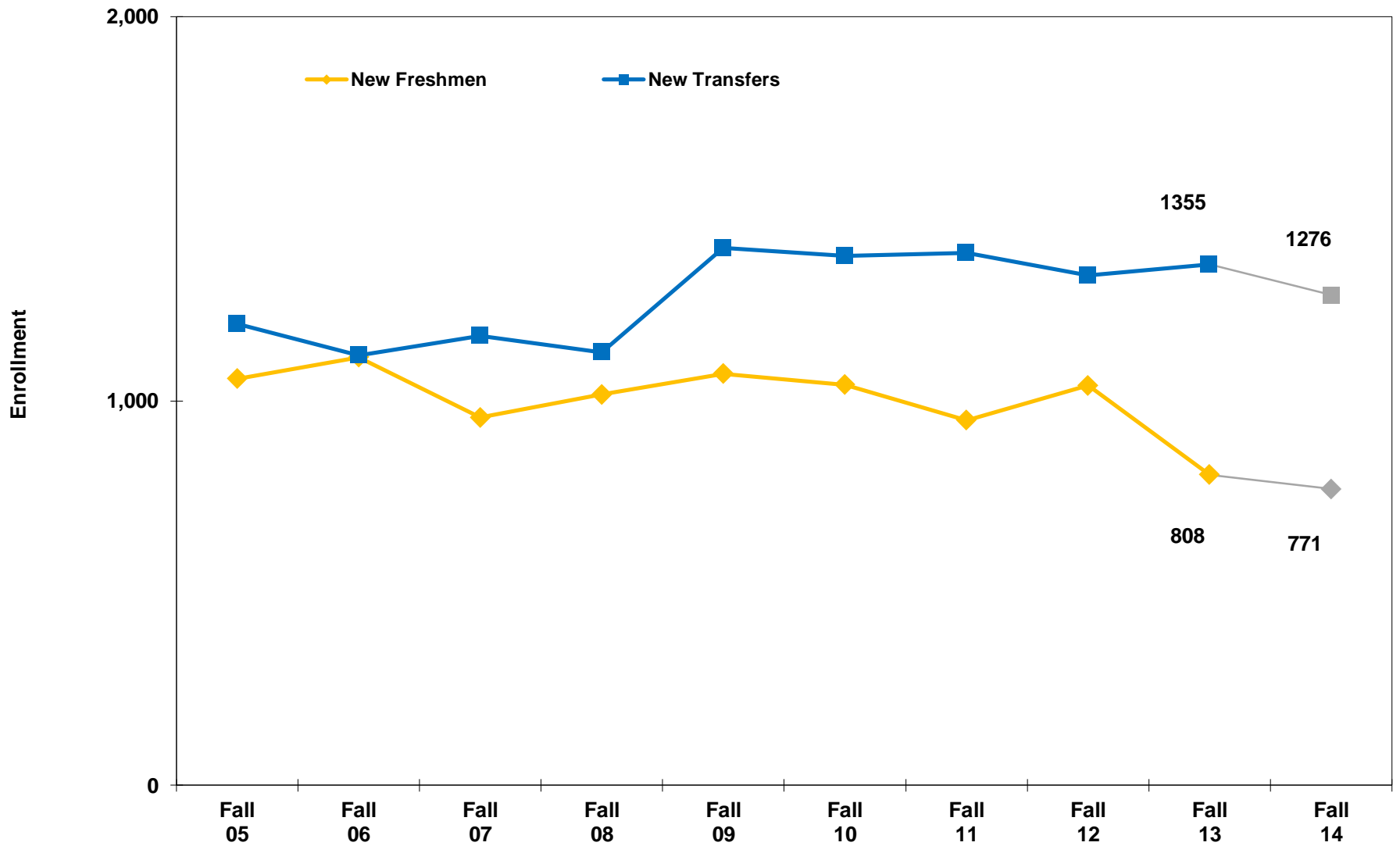
Undergraduate Enrollment and Credit Hours - 2005 to 2014



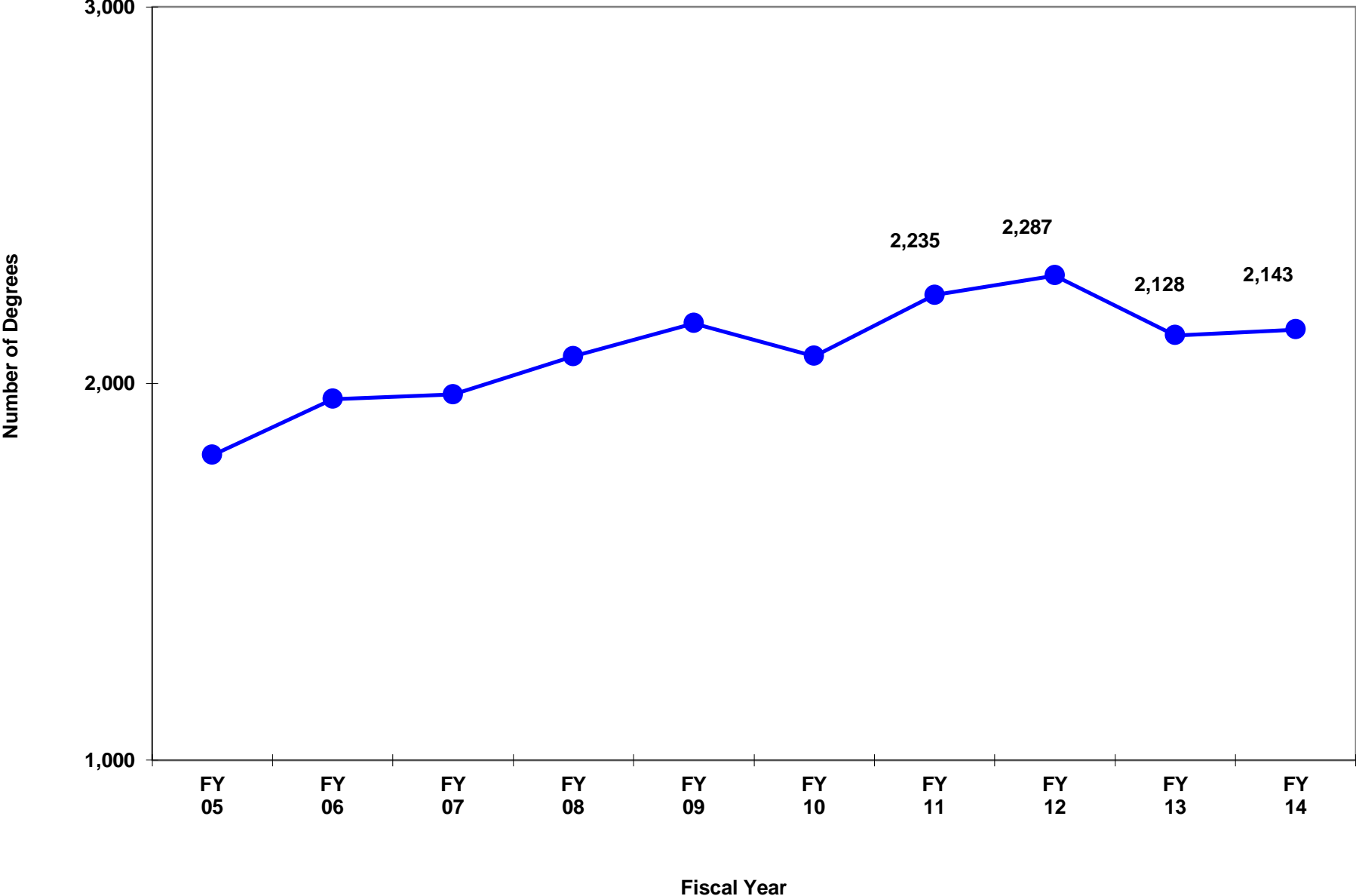
Graduate Enrollment and Credit Hours - 2005 to 2014



New Freshmen and New Transfers Enrollment - 2005 to 2014



Degrees Conferred - 2005 to 2014



Fall to Fall Retention of First-Time Full-Time Freshmen - 2006 to 2013

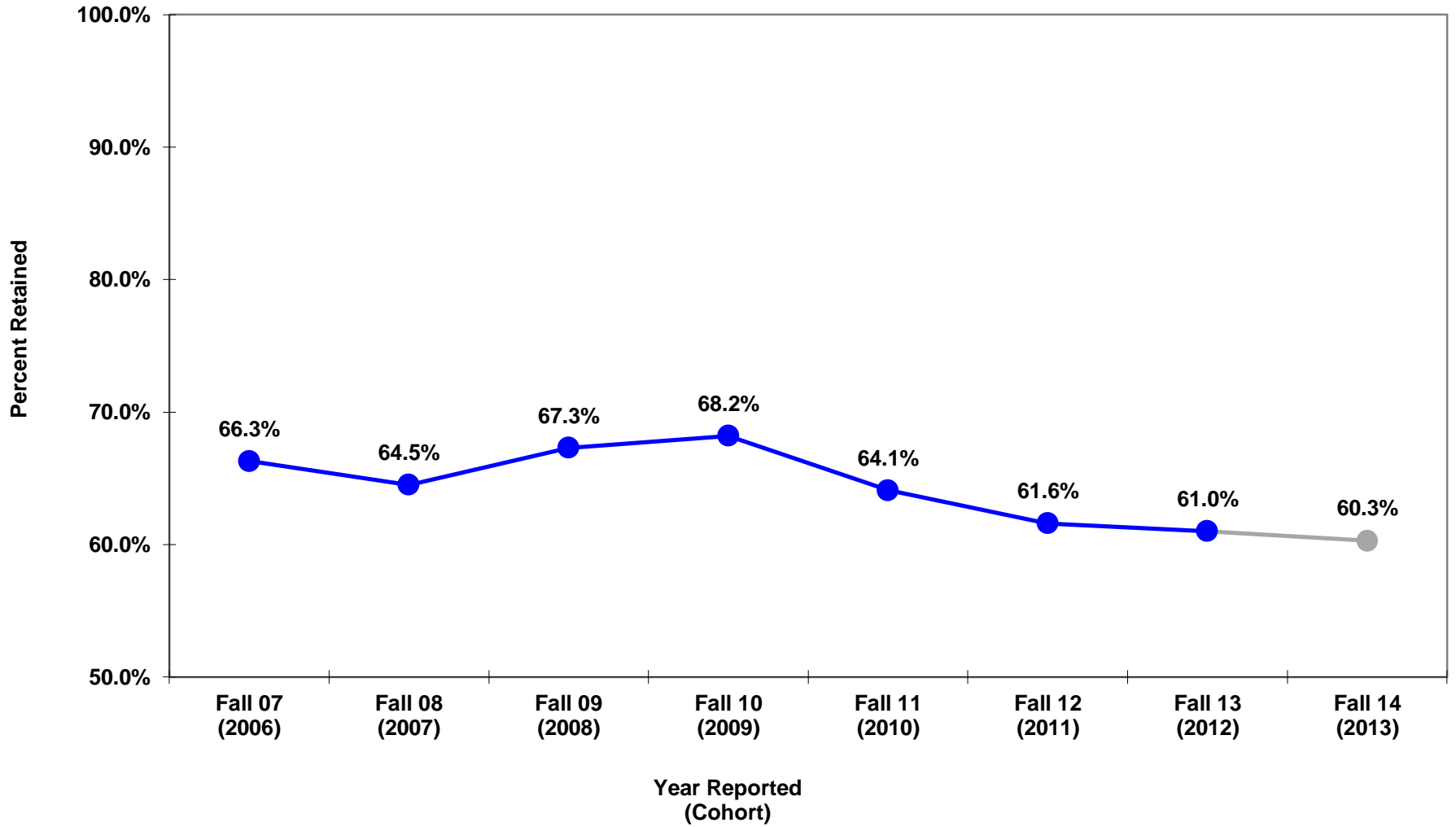
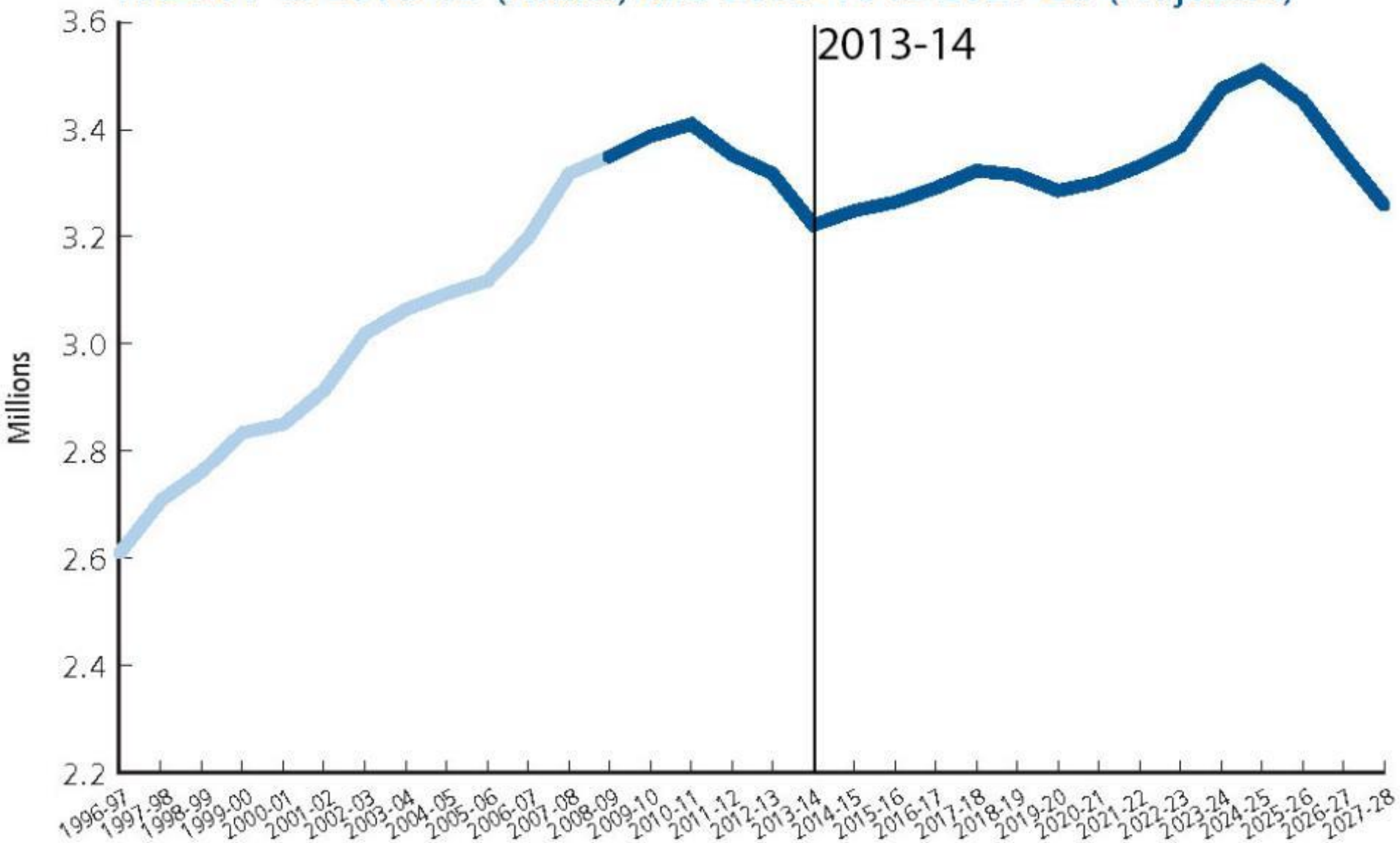
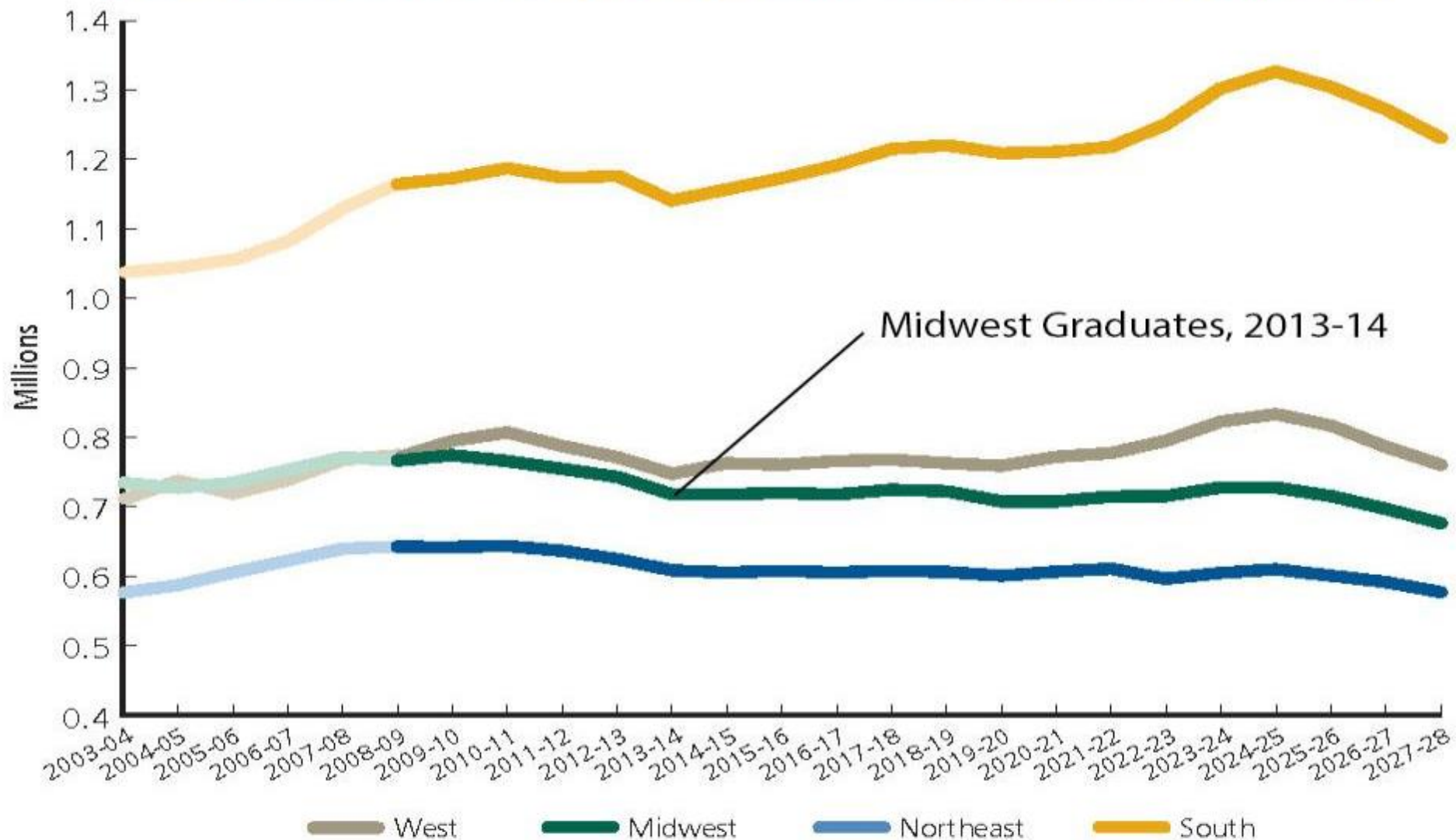


Figure 2.5. U.S. Public and Nonpublic High School Graduates, 1996-97 to 2008-09 (Actual) and 2009-10 to 2027-28 (Projected)

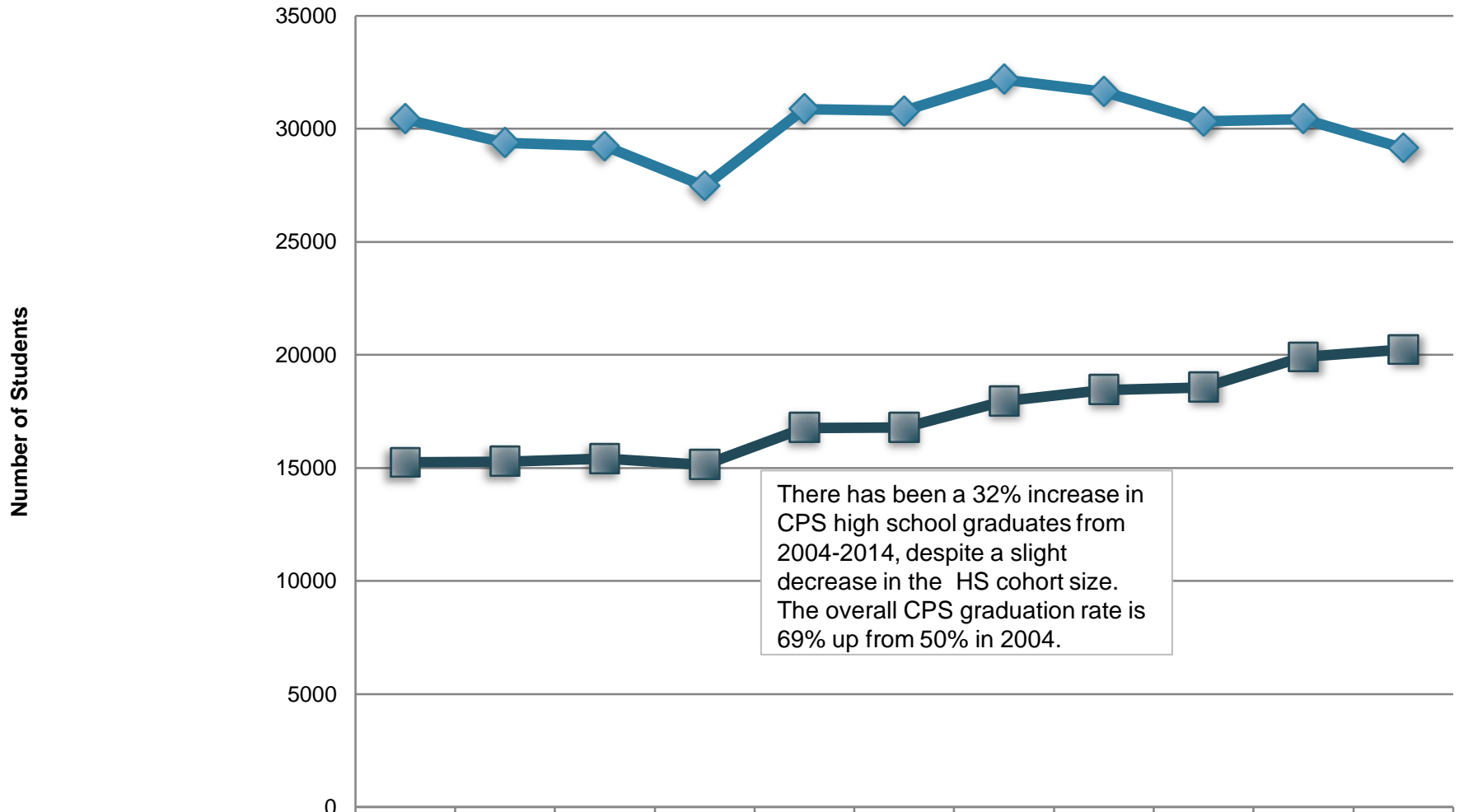


Note: Since the Private School Universe Survey (PSS) is biennial, alternate years include nonpublic graduate estimates based on data from the PSS.

Figure 2.7. Public and Nonpublic High School Graduates, by Region, 1996-97 to 2008-09 (Actual) and 2009-10 to 2027-28 (Projected)



Chicago Public School High School Cohort Size and Cohort Graduates



	2004	2005	2006	2007	2008	2009	2010	2011	2012	2013	2014
◆ Total in CPS HS Cohort	30431	29388	29232	27471	30878	30797	32181	31646	30333	30433	29148
■ Total Graduates from Cohort	15246	15282	15405	15137	16767	16784	17957	18450	18564	19903	20229





FY2015 Revenue

Decrease in:

State Appropriation	\$99,300
Income Fund Projection	\$1,339,100

Increase in:

Budget Adjustment	\$3,700,000
Unfilled Positions	\$1,500,000

Net Revenue Change	\$3,761,600
--------------------	-------------

FY2015 Spending Plan

- Salary and Pension Obligations
- Recruitment and Retention Enhancements
- El Centro Operations







2010 MAY COMMENCEMENT
Northeastern
UNIVERSITY

Degree Programs

BS Environmental Science
Masters of Social Work

BA in Philanthropy
RN to BSN (Nursing)
Masters in Public Health
BS in Graphic Design

El Centro











Strategic Plan

Action Step 5.2:

“Add a residential life component consistent with the mission of the University.”

Student Housing

- Enhance our ability to recruit and retain students
- Recruit regionally, nationally and internationally
- Foster a sense of community
- Improve retention
- Support the growth and vitality of the University and the neighborhood



4:28 - Mrs
Alur
Ross
Lyons - 20









AMERICAN
CAMPUS
COMMUNITIES



AASCU



Northeastern Illinois University

Initiative to Refresh the 2008 Strategic Plan

Keeping the Mission, Vision, Values and Goals of the 2008 Strategic Plan, review and update as needed the Action Steps to guide the University for the next several years.

Initiative to Refresh the 2008 Strategic Plan

- Steering Committee
- Planning Team
- University-wide Meetings
- Conclude in Early December



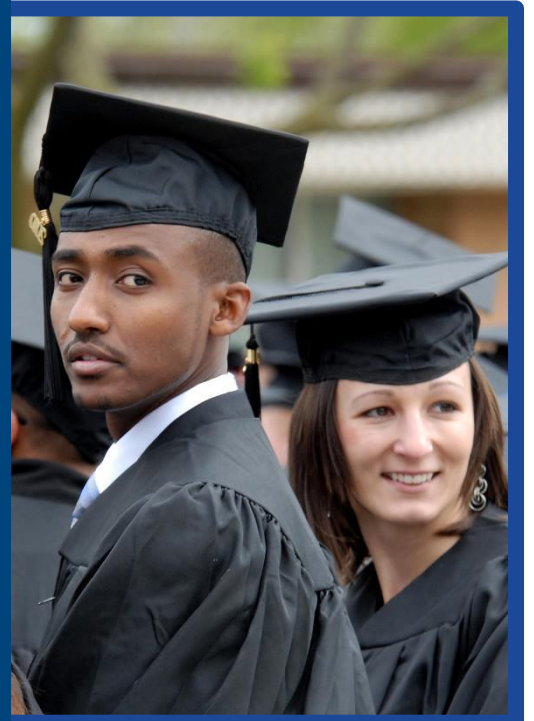
Vision

Northeastern Illinois University will be a leader among metropolitan universities, known for its dedication to its urban mission, for the quality of its programs, for the success of its graduates, and for the diversity of its learning environment.









Learn in the city.
Lead in the world.